

Wireless outdoor solar security camera

User Manual

Model: AT-S600



Warranty Service

Thanks for your shopping and trust.

If you have a good experience with our product, please leave us a review. We will optimize your purchase experience as much as we can and provide an excellent lifetime online service.

If you meet any problems in using our product, please contact with us SOON by email as below.

support@alptopsecurity.com

We will supply a best solution for you to solve any problems in 24 Hours.

Any advice will be collected and we'll do our best to improve.

Register via below link to get **2 Years Extended Warranty.**

www.alptopsecurity.vip



If this manual is not clear enough to read, Visit www.alptopsecurity.com to download a PDF file.

Table of Contents

Part 1: Before Installation.....	1-5
Part 2: In-App Setup.....	6-14
Part 3: Physical Installation	15-17
Part 4: Detailed App Instructions.....	18-25
Part 5: How to Save and Delete Videos.....	26
Part 6: More Settings.....	27

Before Installation

Very important Tips

1. Please connect your phone to the 2.4Ghz Wi-Fi firstly before you pair the camera. Solar camera can only be set up with 2.4g Wi-Fi network. (It's OK to use Cell phone 4G data to live viewing it after the camera was set up with 2.4g Wi-Fi network firstly.)
2. The wireless signal range will depend on the strength of your Router Wi-Fi signal. You may possibly need a Wi-Fi extender if your Wi-Fi signal is weak around the yard where you want to install it.
3. Please install the micro SD card when the camera powered off. (Micro SD card is not provided in the package)
4. Please prepare a universal 5V/2A phone adapter. Please charge the battery at the bottom of the solar panel using the provided USB cable, it usually takes up to 8-12 hours to fully charge it. And then attach the solar panel with battery box to the camera using the screws and tools provided in the package.
5. Make sure the distance between your phone, router and the camera is no more than 1.5 feet when you're ready to pair the camera. Ensure that the Wi-Fi signal strength on your phone is good.
6. The PIR range is 18 feet around, the recommend camera install height is 9 feet around. To avoid too much false alarms, we suggest you do not install the camera with nearby bushes, shrubs, grasses and tree leaves coming into the PIR range.
7. If you install the camera on stucco, brick or concrete surface, please mark 4 holes matching the drill template and then use a drill driver to drill into the wall and insert the expansion screws to hold the camera tight.

Before Installation

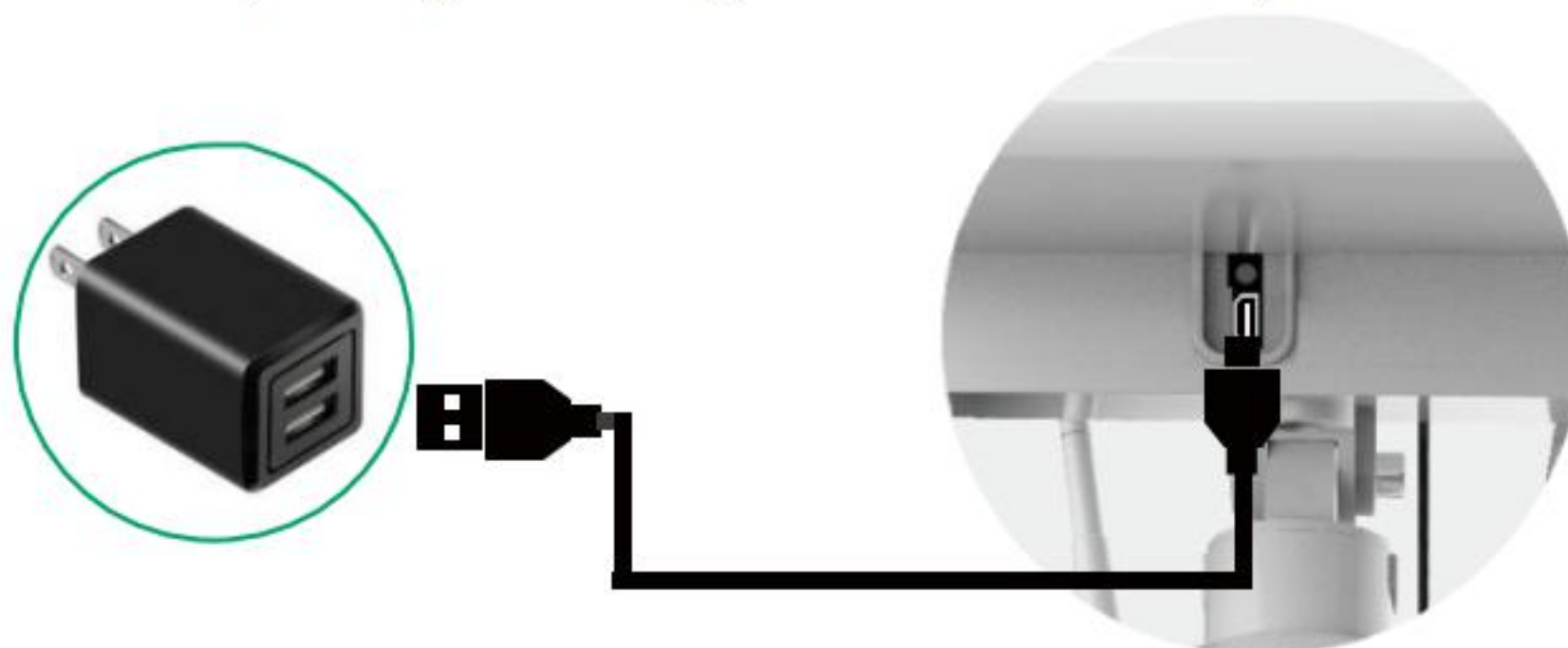
Product Diagram



Before Installation

1. Charge Your Solar Panel Battery Box

Please prepare a universal 5V/2A phone adapter. Please charge the battery at the bottom of the solar panel using the provided USB cable, it usually takes up to 10-14 hours to fully charge it. And then attach the solar panel with battery box to the camera using the screws and tools provided in the package. The camera front LED will flash green during charging and when the battery was fully charged, the green LED will stay on.



2. Install a micro SD card

Please insert your micro SD card to the slot correctly according to the below picture. the camera only support class 10 above quality micro SD card from capacity 8GB to 64GB. Please make sure to insert the micro SD card when you power off the camera, this camera doesn't support hot-plugging and play.

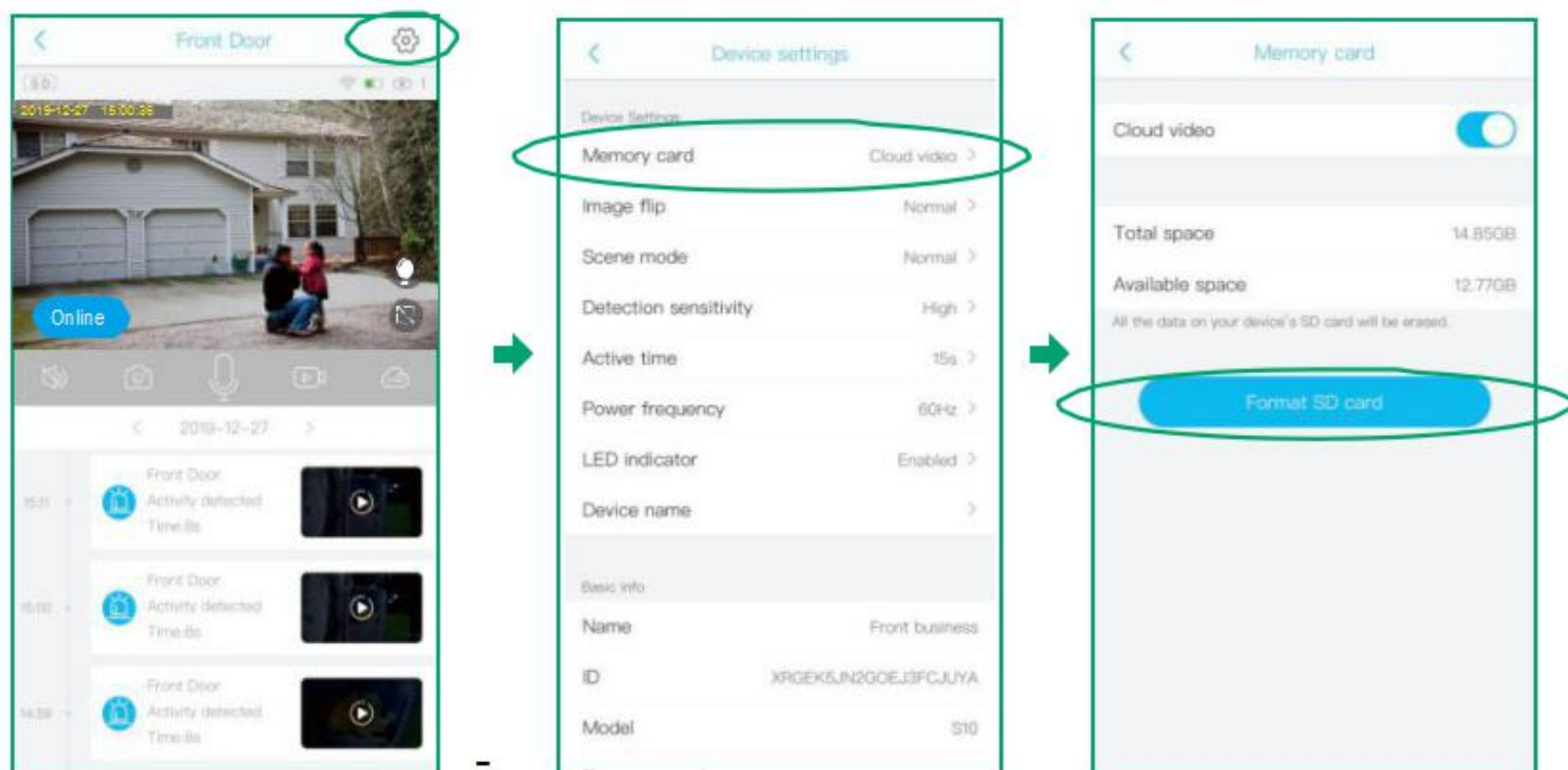


The text faces down

Before Installation

Please Note: We suggest you to format the SD card to FAT32 on your app for the first time use.

Please click "⚙️" and "Memory card", then choose "Format SD card", when camera is on line.



Before Installation

Package Content



Camera



1 x Solar Panel with
Battery Box



1 x Fittings Bag



1 x USB Cable



1 x User Manual



1 x Position Paper

In-App Setup

Make sure the distance between your phone, router and the camera is no more than 1.5 feet when you're ready to pair the camera. Ensure that the Wi-Fi signal strength on your phone is good.

1. Download the UBox App (works only with IOS & Android devices)

Please locate "UBox" in your Google Play store or App store to download the UBox App.

Note: Please click "Allow" or "Agree" on all access when you download UBox and during the process of setting up your account so that the UBox can have full access to your camera and phone. otherwise, your camera may have less function or incomplete setups.

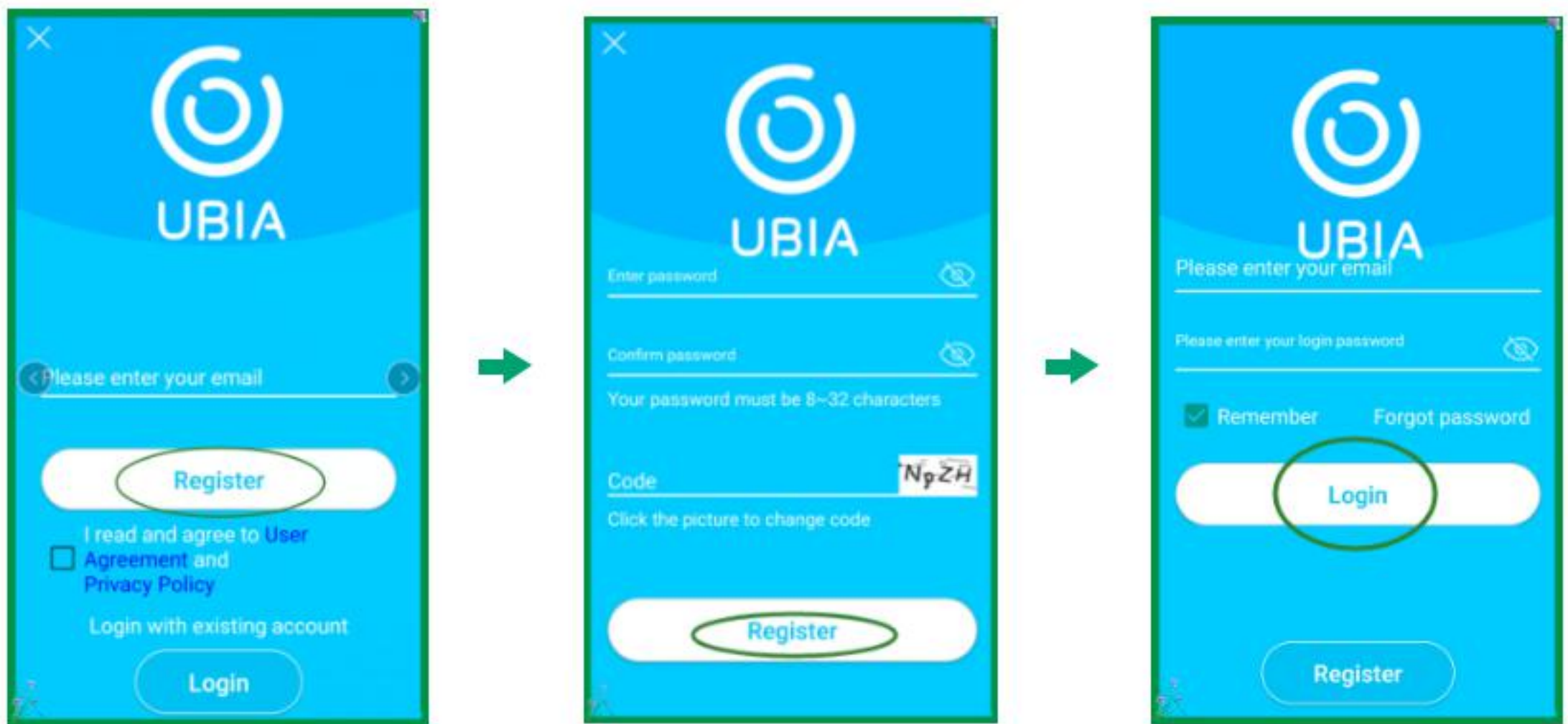


2. Register an account

Open the App and register your account with your email address.

Please set a password for your account and make note to remember it.

In-App Setup

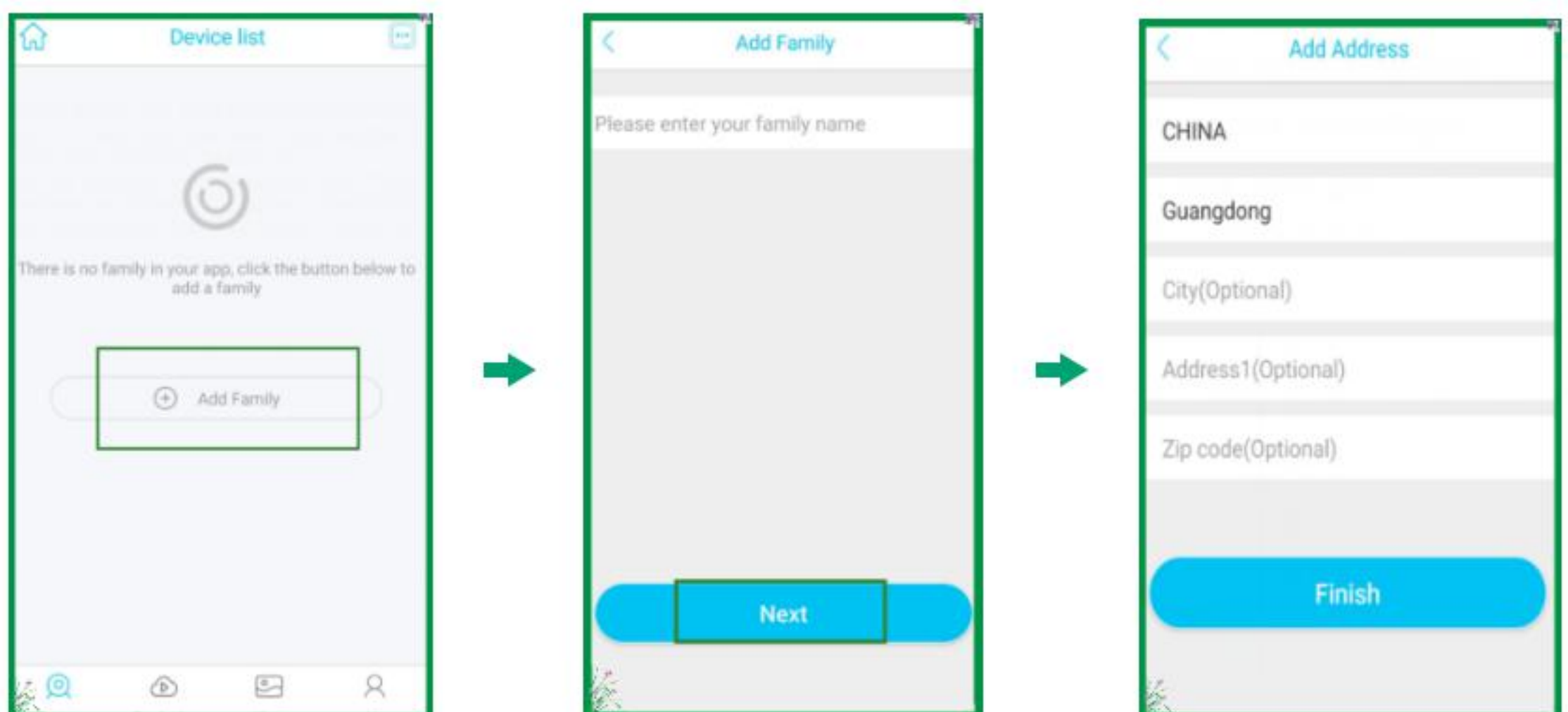


3. Set up the installed location

Click "Add family" and then input your desired family name, click "next step" and then input required information, and then click "finished" to save it.

Please pay attention to **choose your right "Country/Region"** so that you can connect the camera smoothly later and get proper notifications from your correct region server.

Note: The required fields are country and state.



4. Pairing the camera with the App

Turn on the camera: switch the power button to up to turn on the camera, Then you will hear the following voice " The camera is now ready to begin pairing" and camera blue LED blinks .

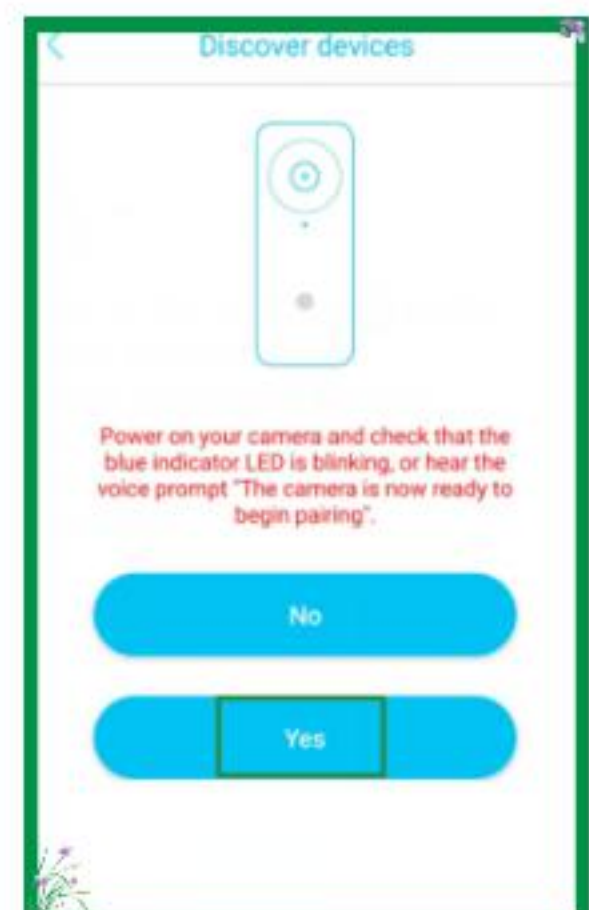
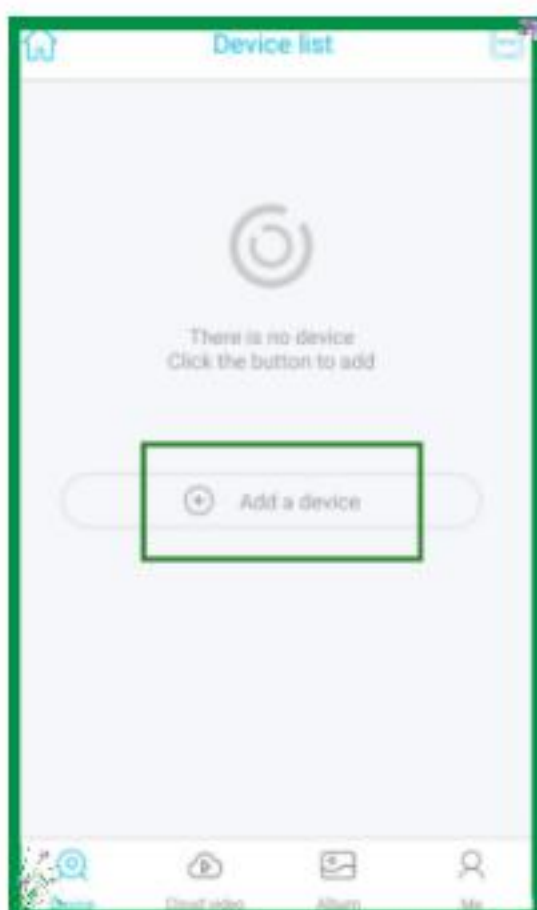


Power Button

Note: Please **connect your phone to the 2.4Ghz Wi-Fi firstly** before you pair the camera, make sure your router password in mind before you start the pairing process.

If the camera LED doesn't blink blue, which means the camera is not in ready to pair condition. Please power on the camera and hold on the reset button for 5 seconds and then release it when you hear "system reset" to reset your camera to default.

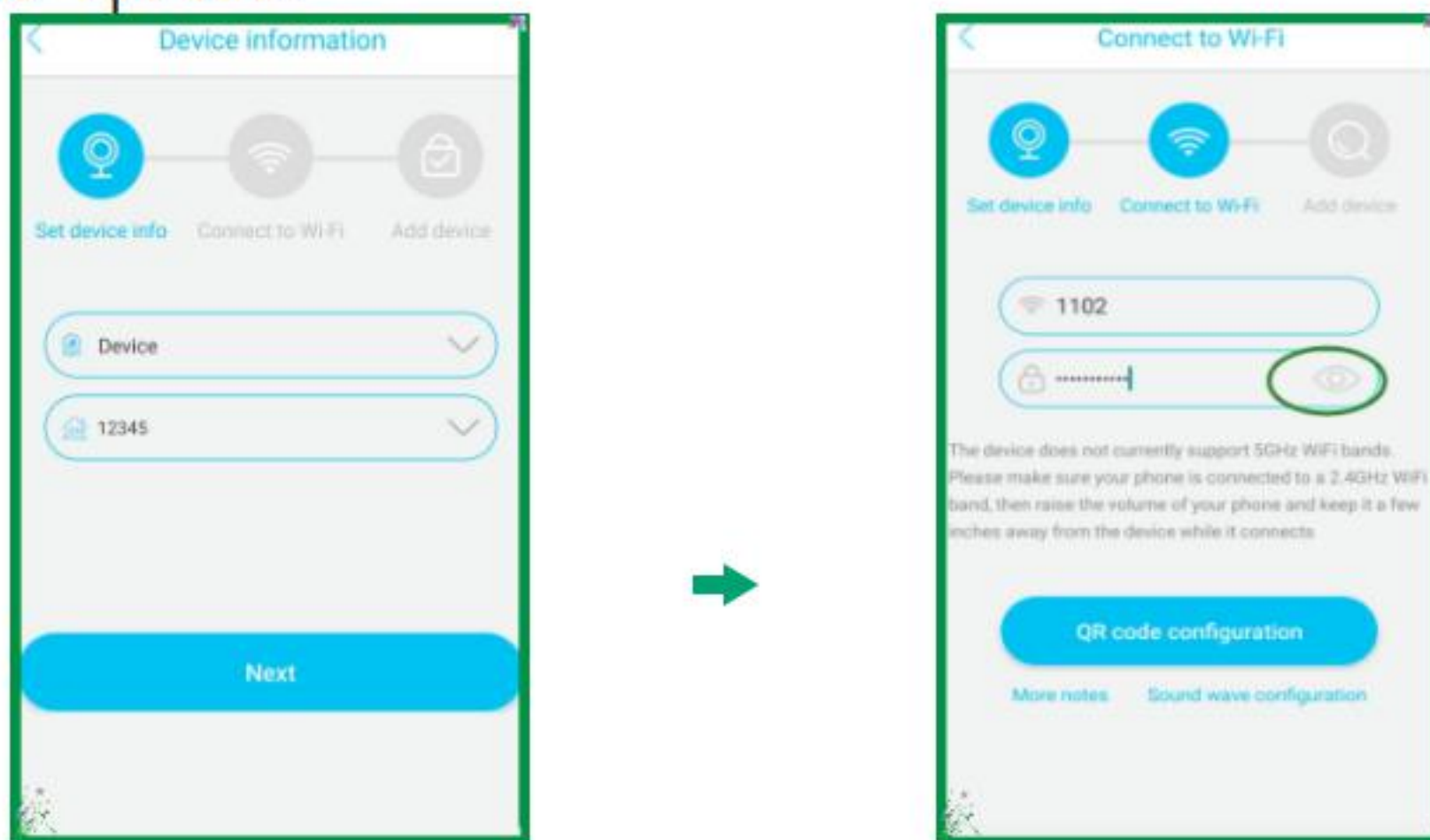
- 1) Click "Add a device" and then choose "Setup Wi-Fi Device", click "Yes", when you hear the following voice " The camera is now ready to begin pairing.



- 2) When your phone or tablet connected well with your 2.4G WiFi and you allow the access of using the location for the app, your WiFi name will be shown here automatically. Otherwise please check your WiFi list from your devices and you have to turn on the location services for the UBox .

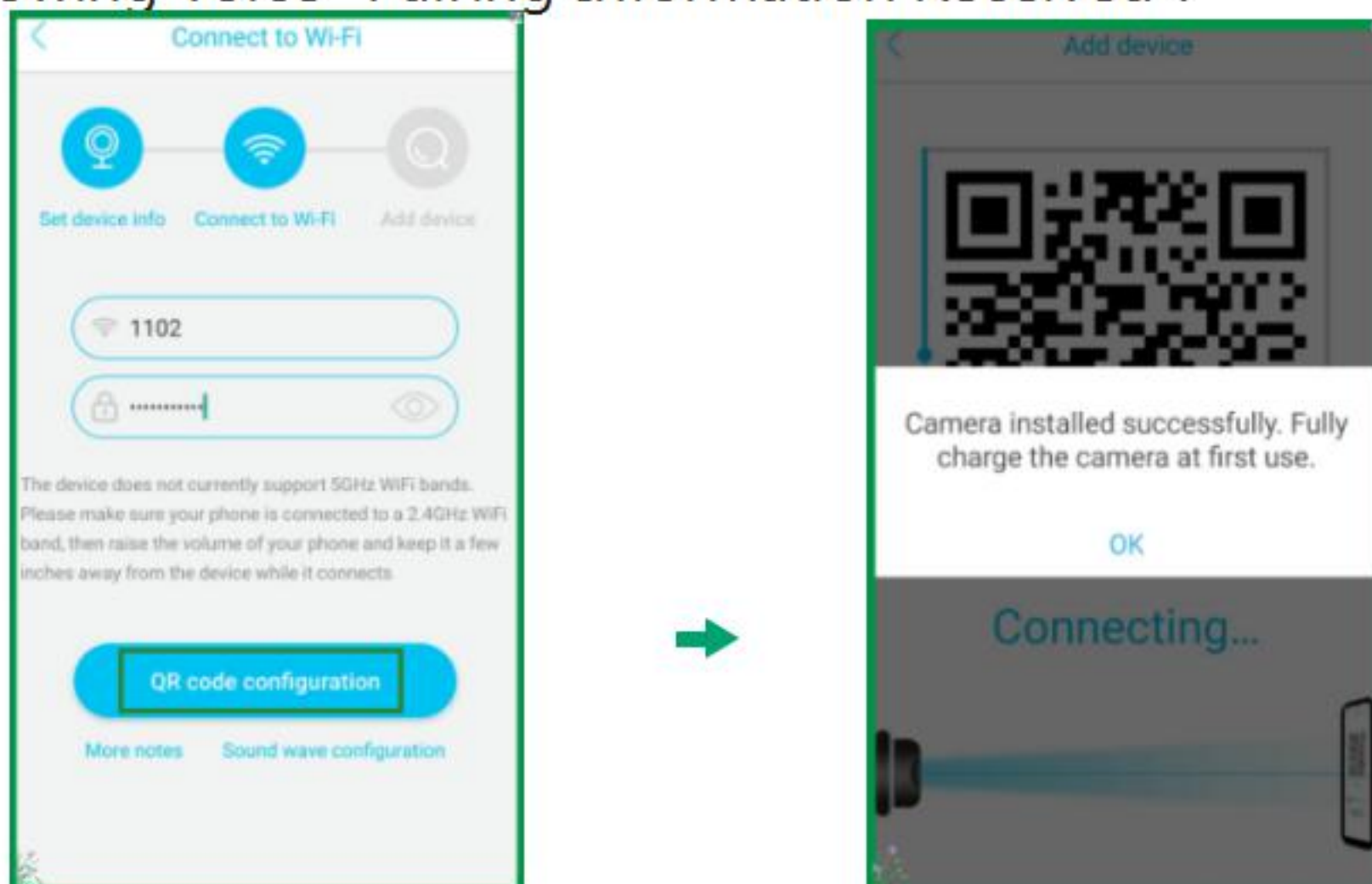
In-App Setup

- 3) Set device information, Choose a name of the devices from the drop-down choice, or you can modify one that you want. and then select the area where device is located. (you have to choose one or you cannot connect the camera to the app). Input the CORRECT WiFi password of your router, if you input a wrong password you will not be able to connect it successfully. Click the eye icon to double confirm the password you entered correct. Please be careful not to leave spaces.



Method 1: QR code configuration

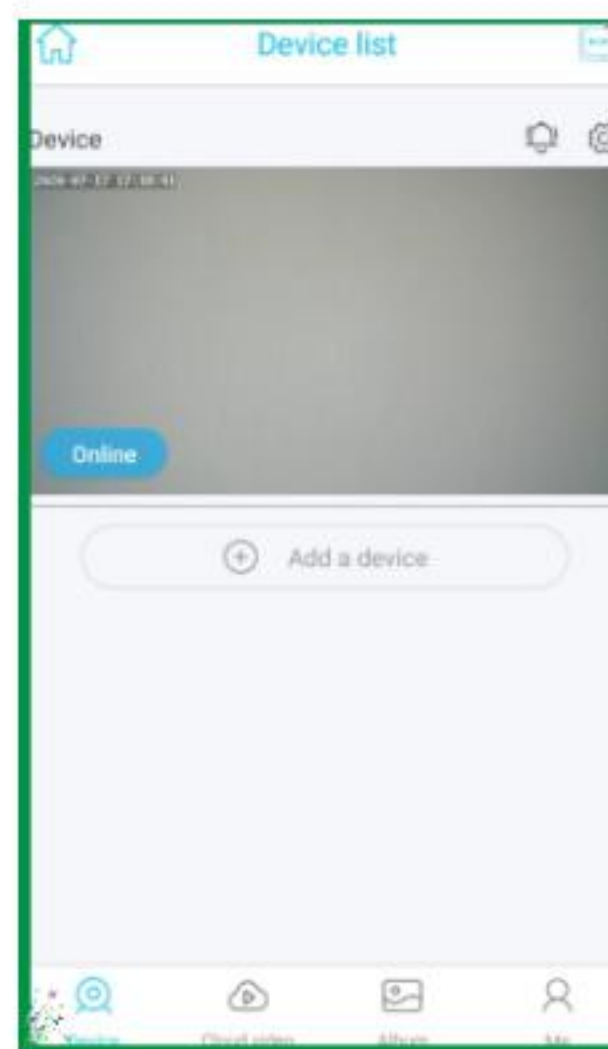
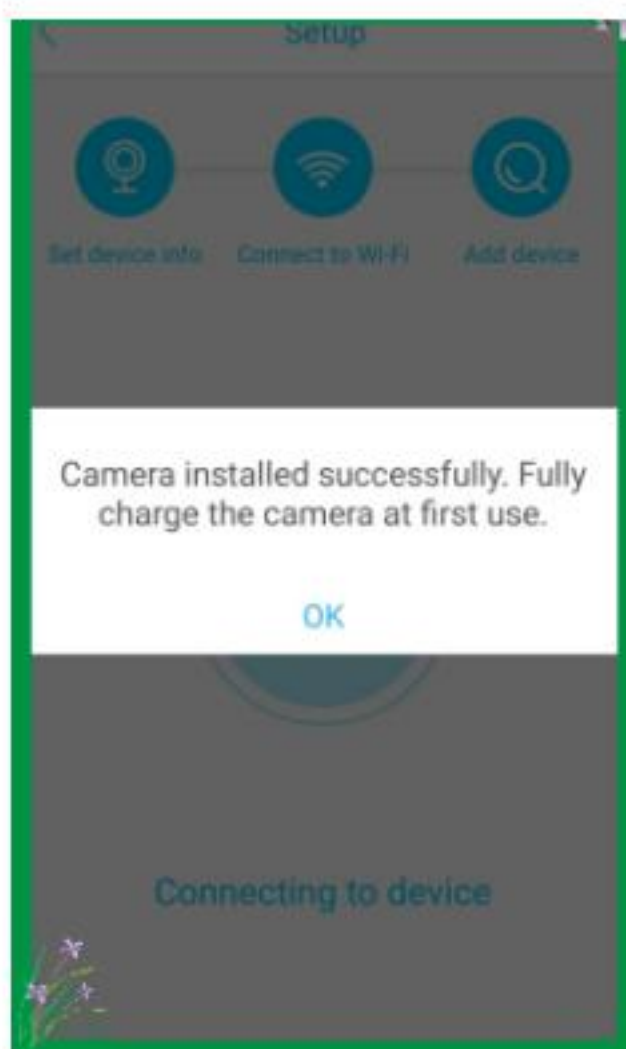
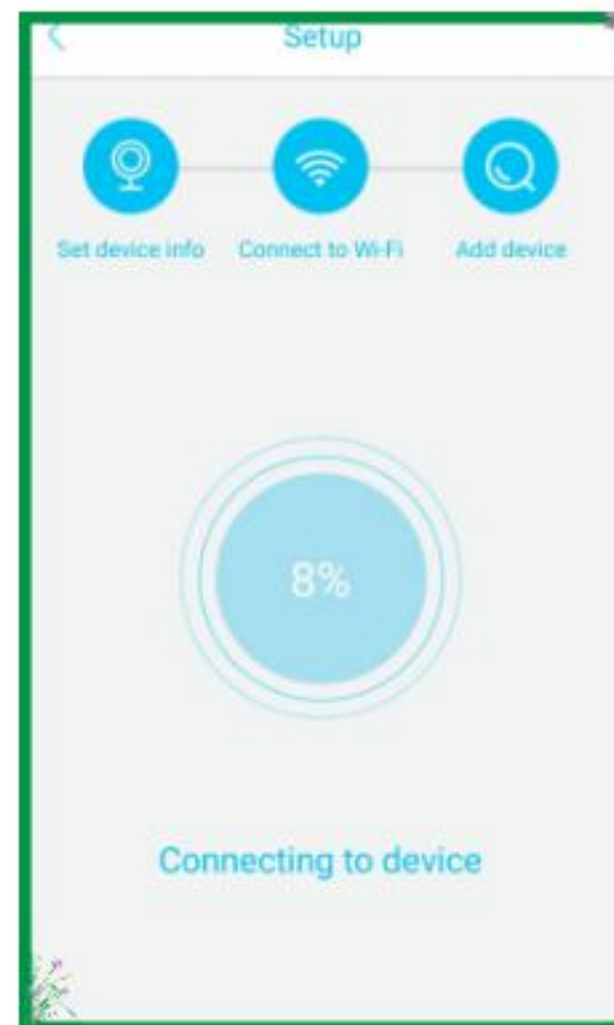
- 1.1 Click the "QR code configuration", **hold the phone QR code in front of the Solar camera lens**, and then you will hear the following voice "Pairing Information Received".



In-App Setup

Method 2: Sound wave configuration

2.1 Enter into the "Connect to WiFi" page, make sure to turn up you phone's volume to the Maximum. Click "Sound wave configuration" and waiting about 30-60s. you will hear the following voice: "Pairing Information Received".



In-App Setup

Congratulations! You have connected your camera to the App successfully, now you can live view the camera on your phone anytime and anywhere.

If you're unable to pair the camera, please check below suggestions:

1. Please reset the camera to default after you fully charged the camera.
2. Please turn up your phone volume to the maximum, if you pair up the camera through sound wave.
3. Please put the camera, phone as near as to your router (within 1.5 feet) to get a strong Wi-Fi signal strength.
4. Please click on the eye icon when you input your router Wi-Fi password to make sure your Wi-Fi password CORRECT. the camera will not work with a hidden network SSID.
5. Please make sure your router setting is DHCP enabled, otherwise your router will not send out Wi-Fi signal for any wireless device for pairing up.
6. Reboot your router to refresh your Wi-Fi connection.

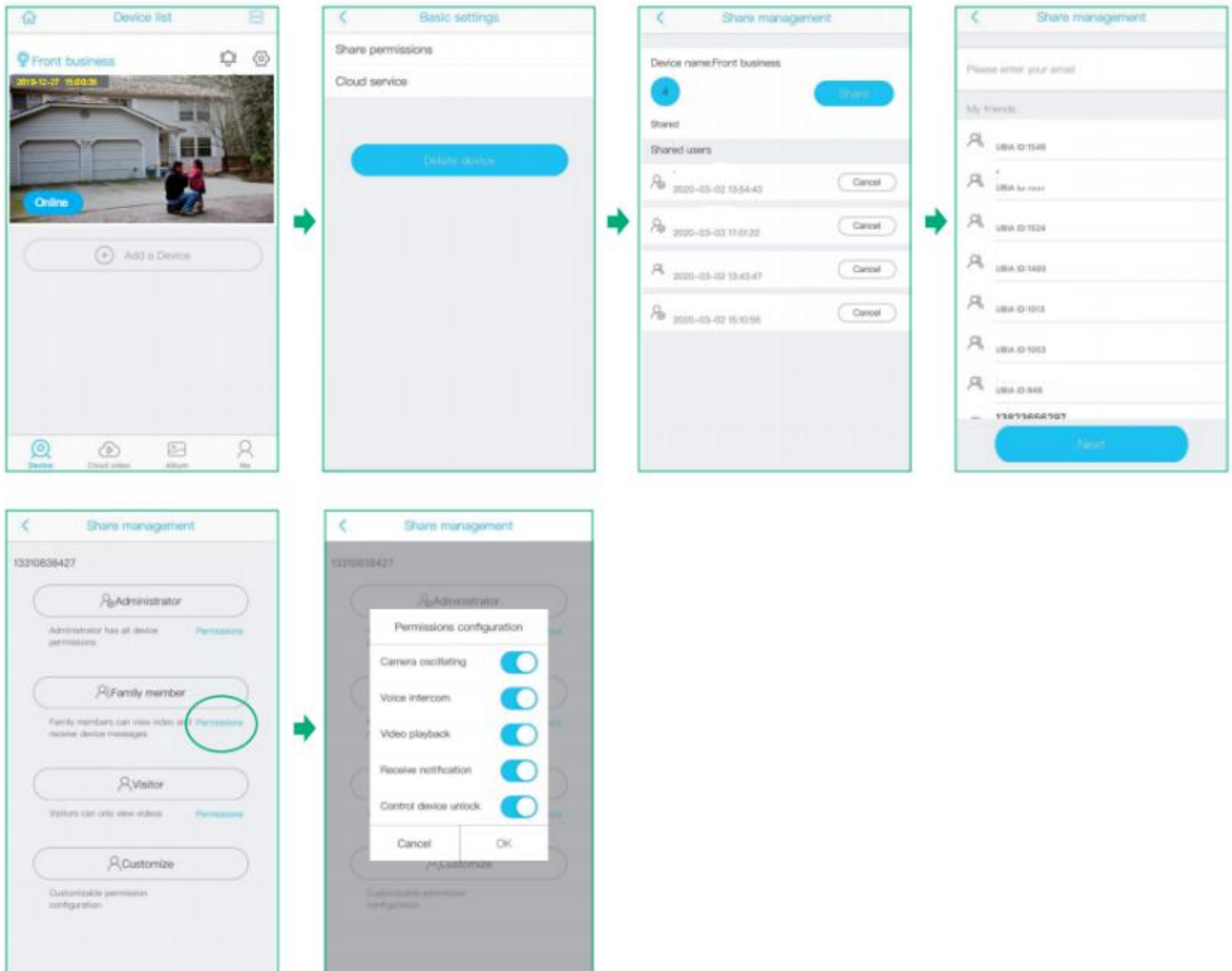
5. How to reset camera

Press and hold on the reset button for 4-5 seconds to reset the device. You need to release the button when you hear "system reset".



6. How to Share Your Camera with More Users

When you can use your camera properly. You can start to share your camera to your friends or family members. click" ⚙️"and choose "share permissions". input the account that you want to share with. Choose a permissions from Administrator, family member, Visitor, Customize.



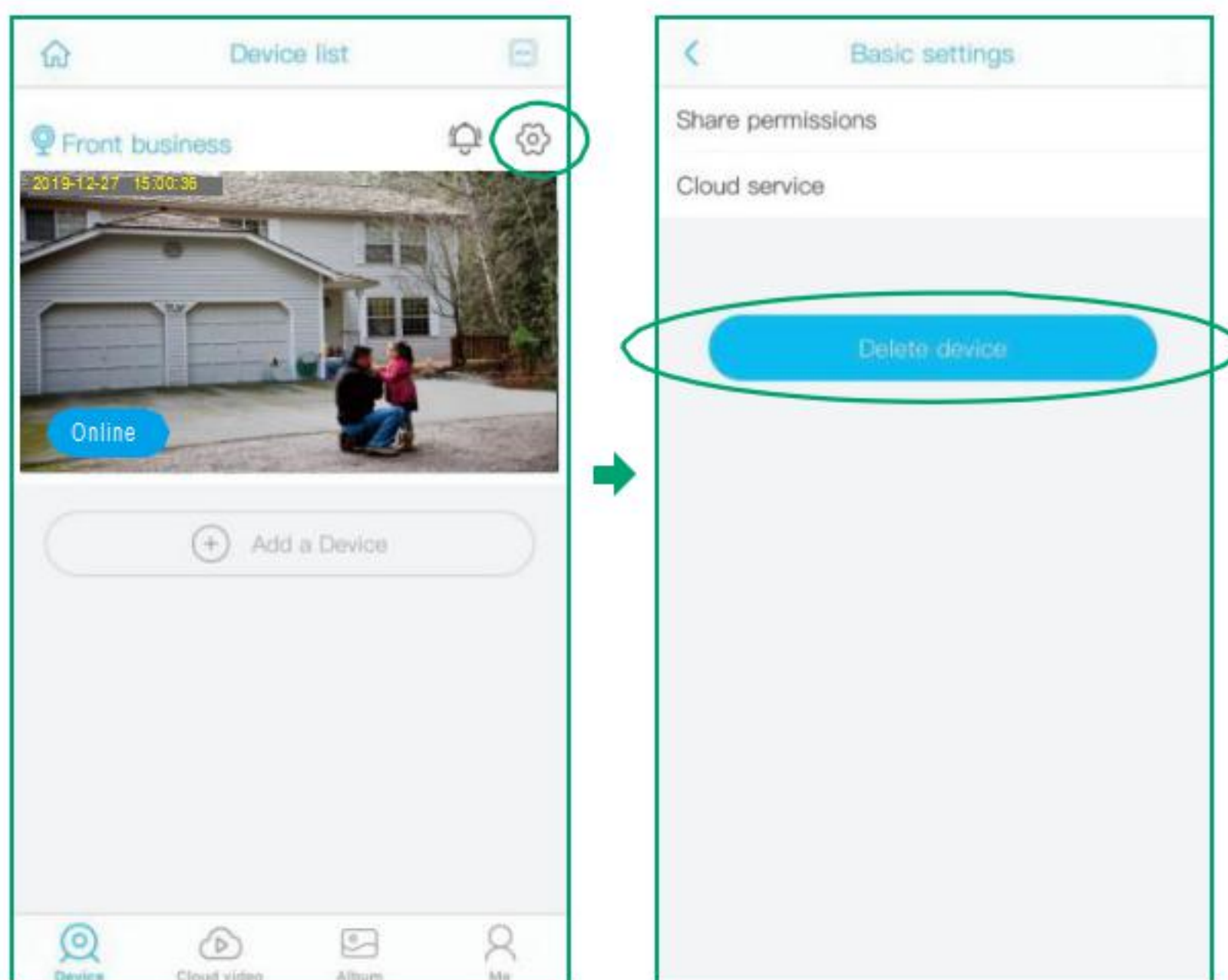
Please let the invited user to register a Ubox account using their email first and then start to share according to the instructions above.

You can Customize the permissions and turn on or off every permission as you wish by clicking the blue icon"permissions".

7. How to unbind your camera

Please do not forget to unbind your camera from your App when you plan to return the camera, to avoid any personal information disclosure risk.

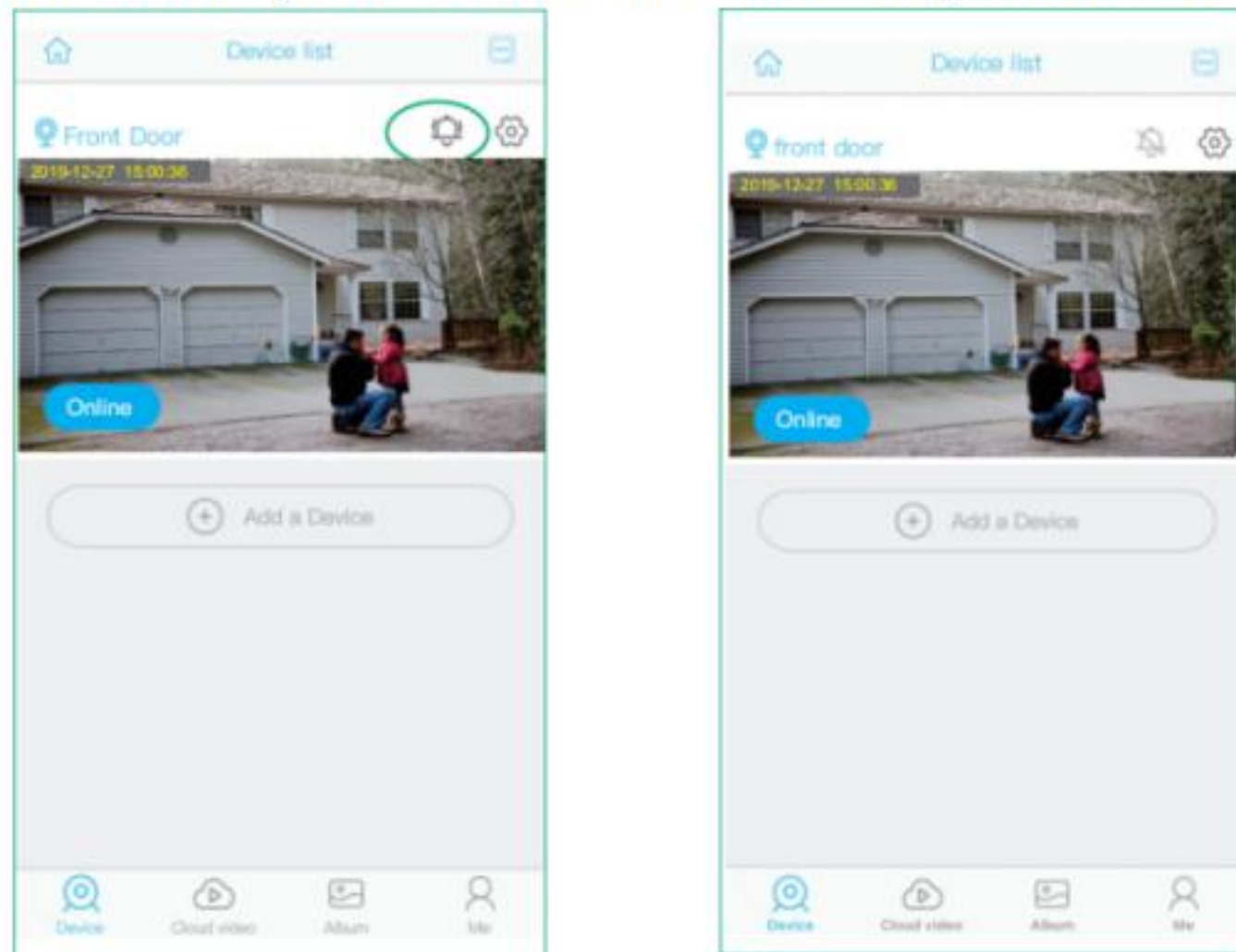
And unbind your camera as following steps, click" ⚙️ " and then choose "delete"



In-App Setup

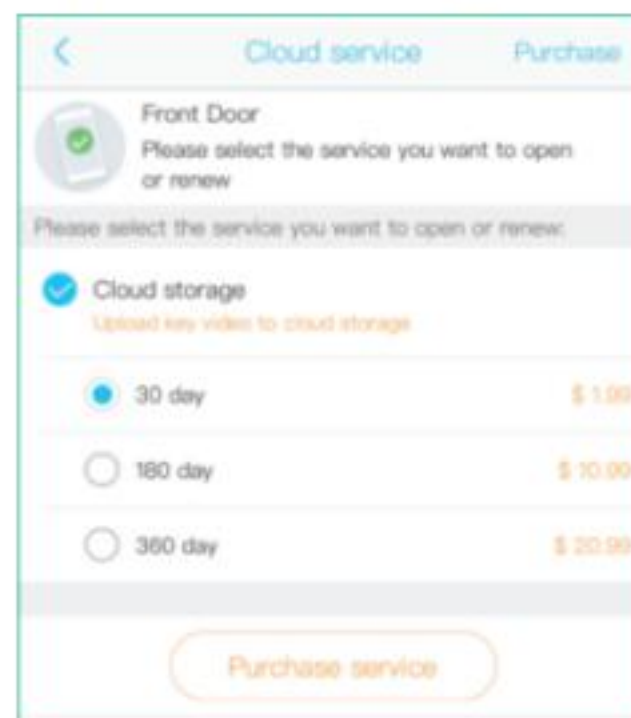
➤ Push Mode

This icon indicate that the push mode is on, click it to turn off push mode and then you cannot receive any notifications.



➤ Cloud storage

The motion detection video clips will save in the Cloud. Cloud video length is 10-30 seconds defaulted. And you have to pay for the service per month or other cloud service. You can choose a service from the UBox provided to purchase.

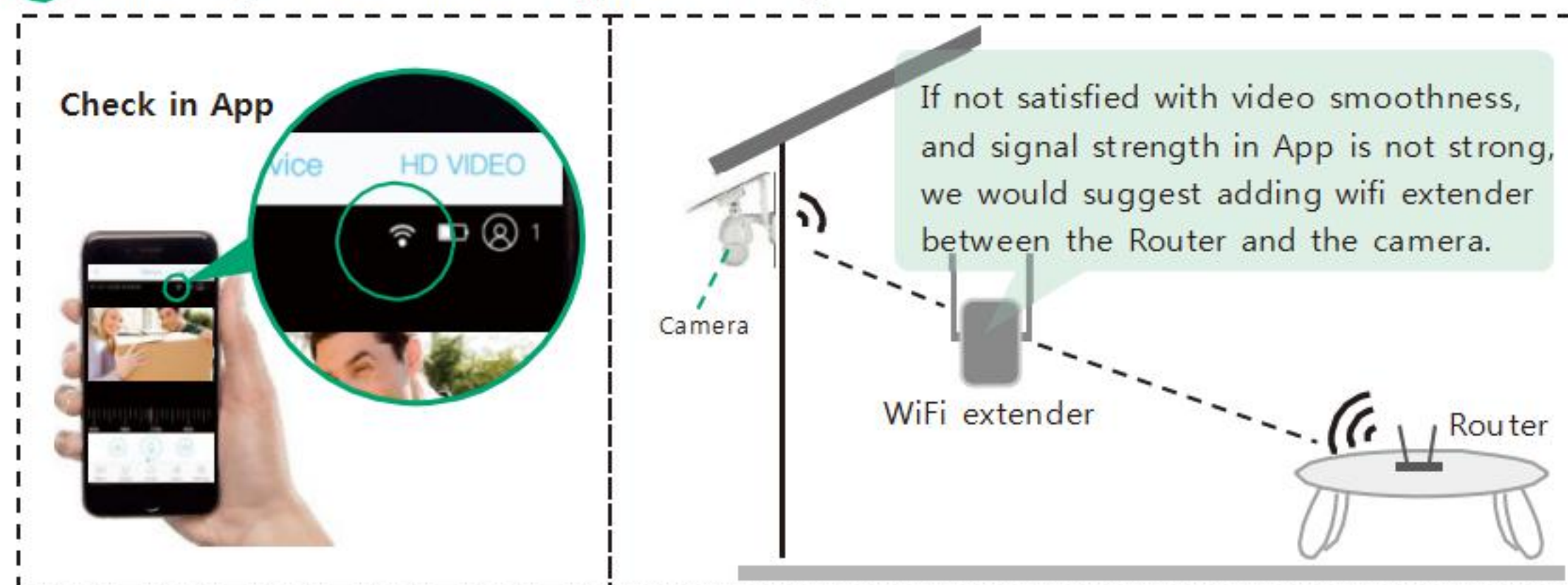


How to change cloud video length:

Go to live view mode and find "Device setting" gear icon - go to "Active time" - change the time as you want. The spotlight will turn up with same time length when motion was triggered at night.

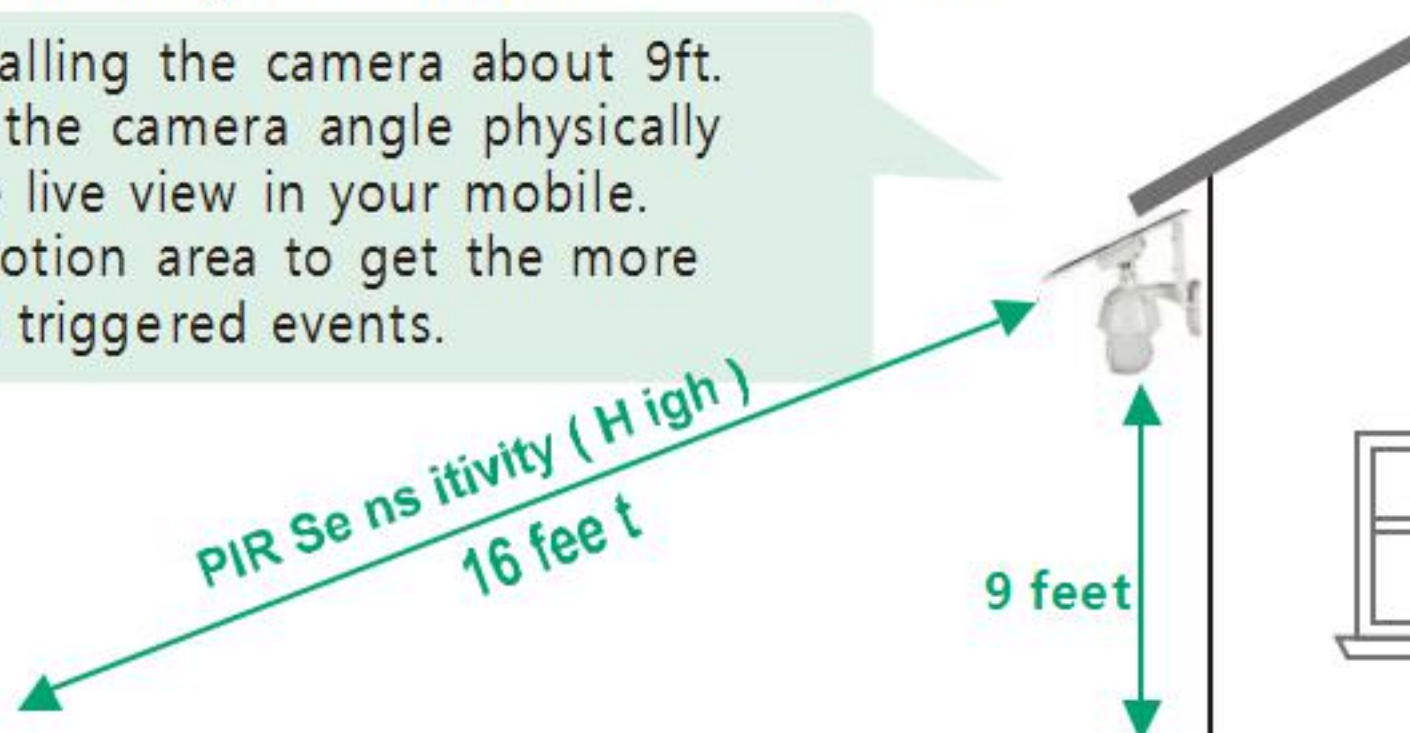
Physical Installation

1 Check your camera signal strength



2 Recommended height to install the camera

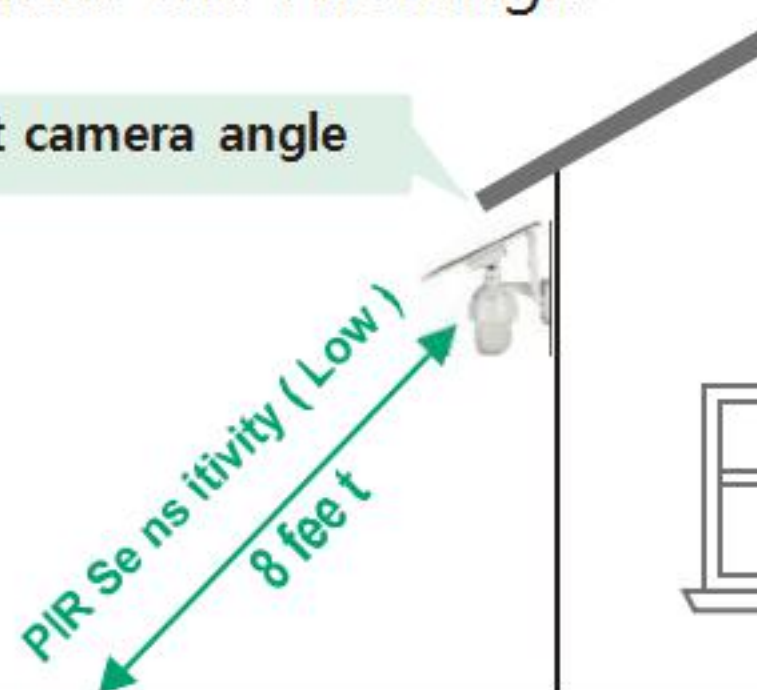
We suggest installing the camera about 9ft. You may adjust the camera angle physically according to the live view in your mobile. to focus your motion area to get the more accurate motion triggered events.



If your camera get numerous motion alerts unexpected

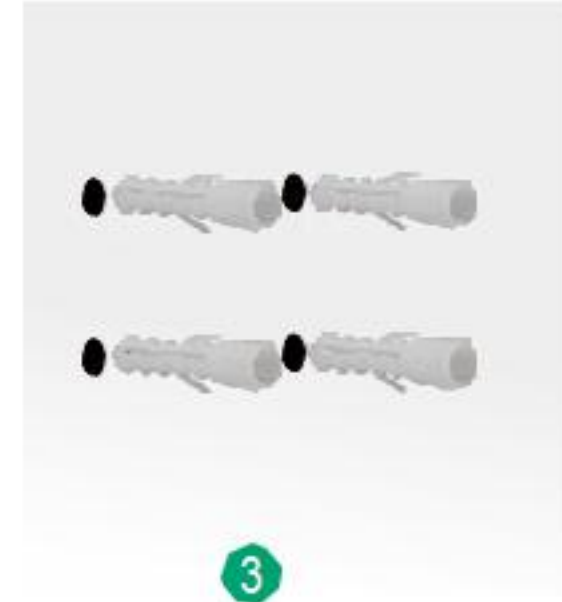
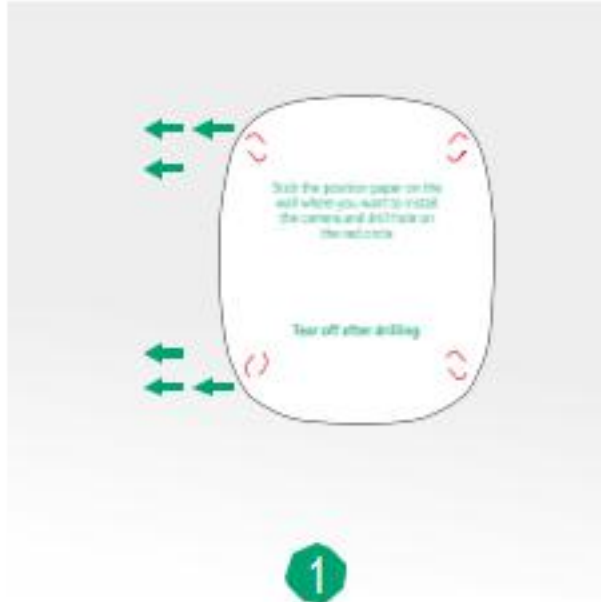
- 1) Please adjust your camera installation angle a bit down to focus the motion area.
- 2) Please change your PIR sensitivity to Low to reduce the PIR sensitivity.
- 3) Do not install the camera with nearby bushes, shrubs, grasses and tree leaves coming into the PIR range.

Adjust camera angle



Physical Installation

- 4 Stick the position paper on the wall where you want to install the camera. drilling the 4 holes according to the 4 red dots on the paper and then fix the bracket using the expansion screws.

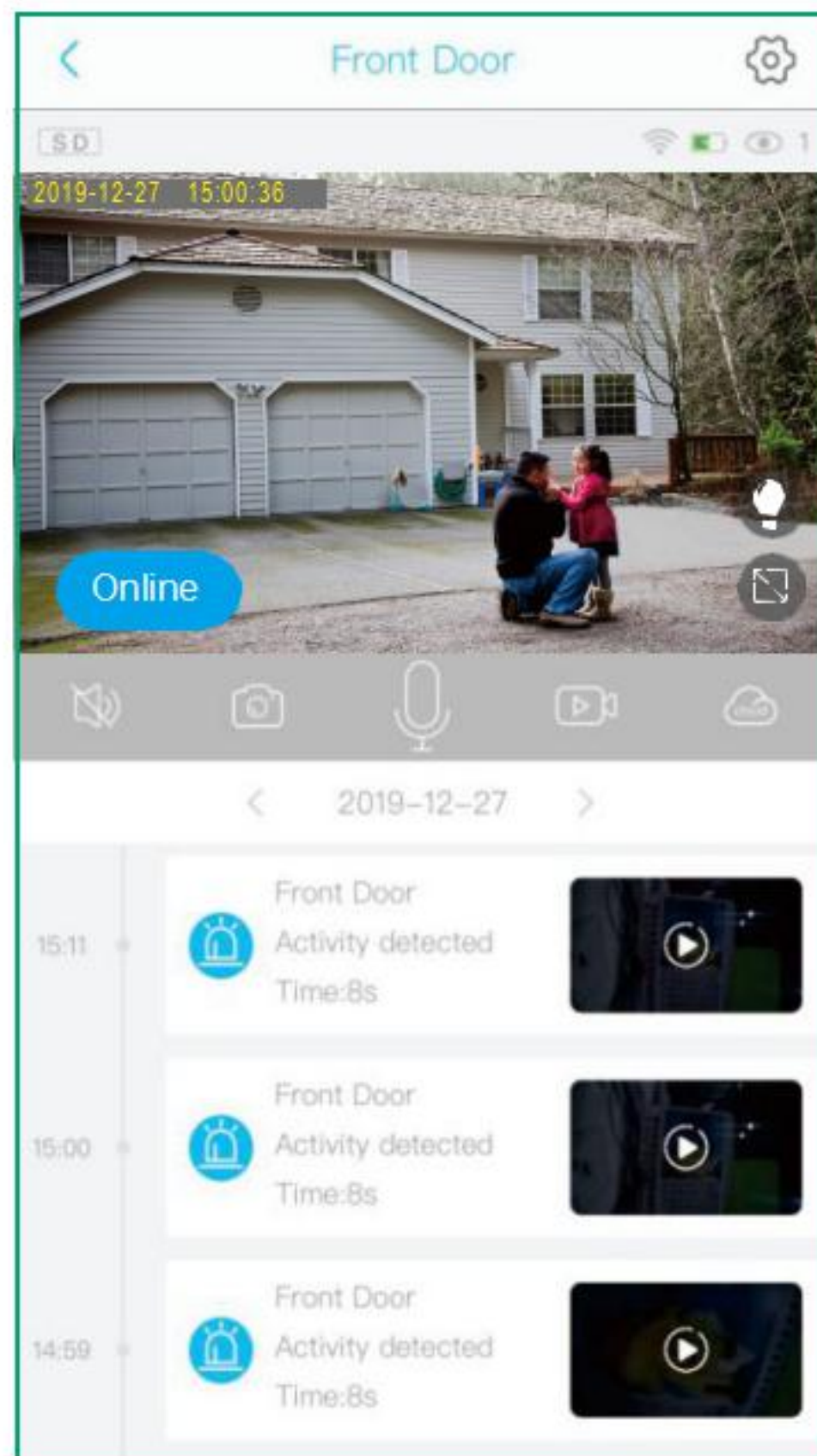
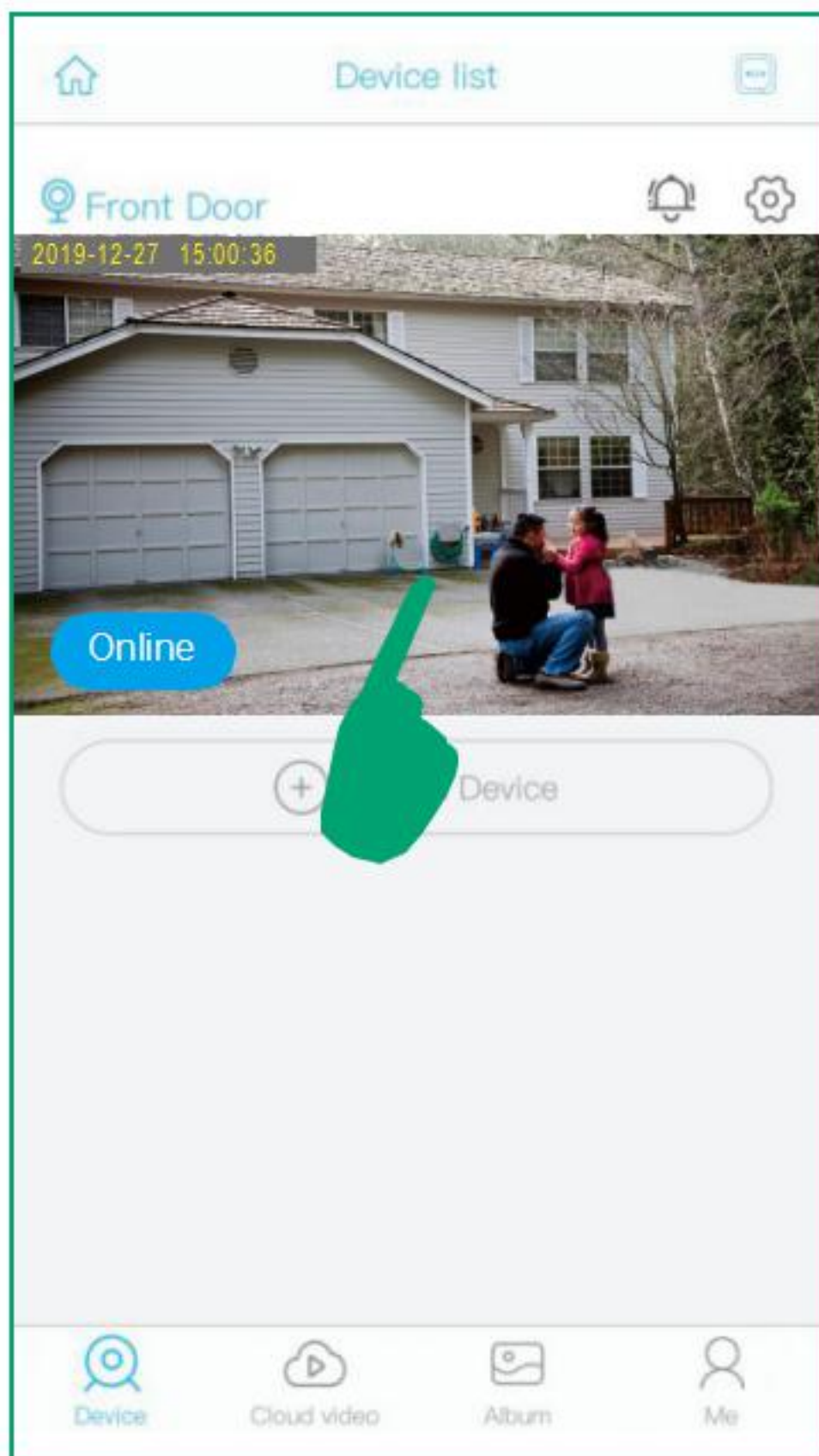


Technical Specifications

Image Quality	Resolution	1080P
Specifications Lens	Lens angle	FOV 160°
Video Specifications	Video format	H.264
	Frames per second	15fps
	SD card support	8GB-Max 64GB
Audio	Output	Built-in speaker
	Input	Built-in microphone
Communications	WiFi	2.4GHz
Battery	Battery capacity	15600mAh (6pcs 2600mAh Rechargeable 18650 battery)
	Standby time	Max 6 months
	Power consumption	2W(run)/ 0.012W (standby)
Applicable Environment	Temperature	-20°C~ +60°C(-4°F-140°F)
	Humidity	20%~85%% (Non-condensing)
System Support	Android 2.3 above/ iOS 7.0 above	
PIR	PIR angle	120°
	PIR range	18ft
Night Vision	Range	Up to 32ft

Detailed App Instructions

1.click  , you could live viewing videos.



Detailed App Instructions

Battery charging sign



When camera exposed to sunlight, the battery will keep charging in green.



During night or fully charged, the battery will stay white.

Tips : If your battery sign will not show correct status as above, please remove the solar panel and then re install it to the camera body. Or contact us support team for a replacement at support@alptopsecurity.com. All friendly customer service staffs are ready to assist you.

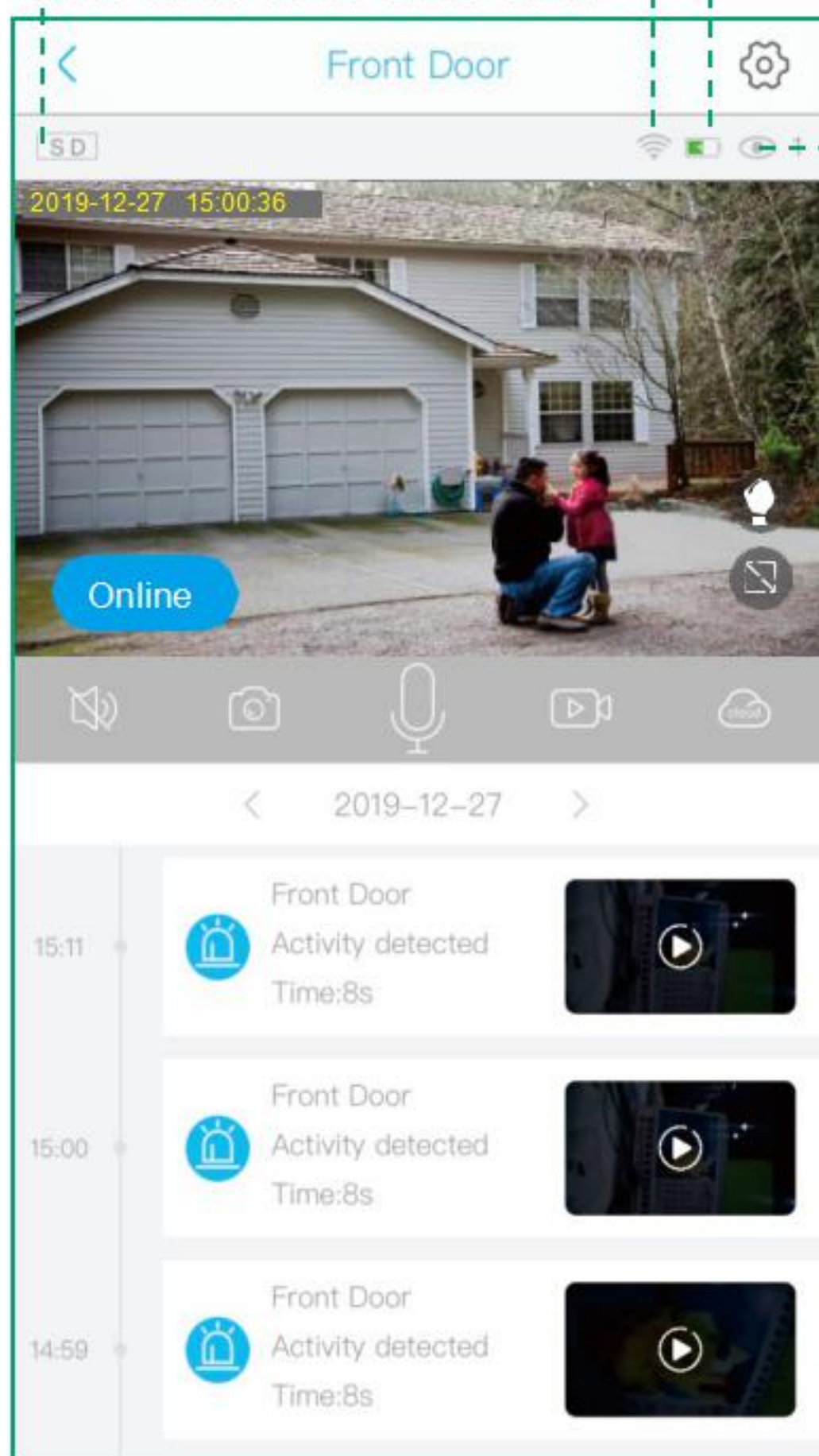


Low power indicator, please recharge the camera manually using the provided USB cable

Wifi signal strength

Tips: Please make sure your camera has a full bar of wifi strength to ensure a smooth live view speed. (A wifi extender is recommended to install beside the camera if needed)

Click here to chose the resolution to HD(1080P) OR SD(720P)

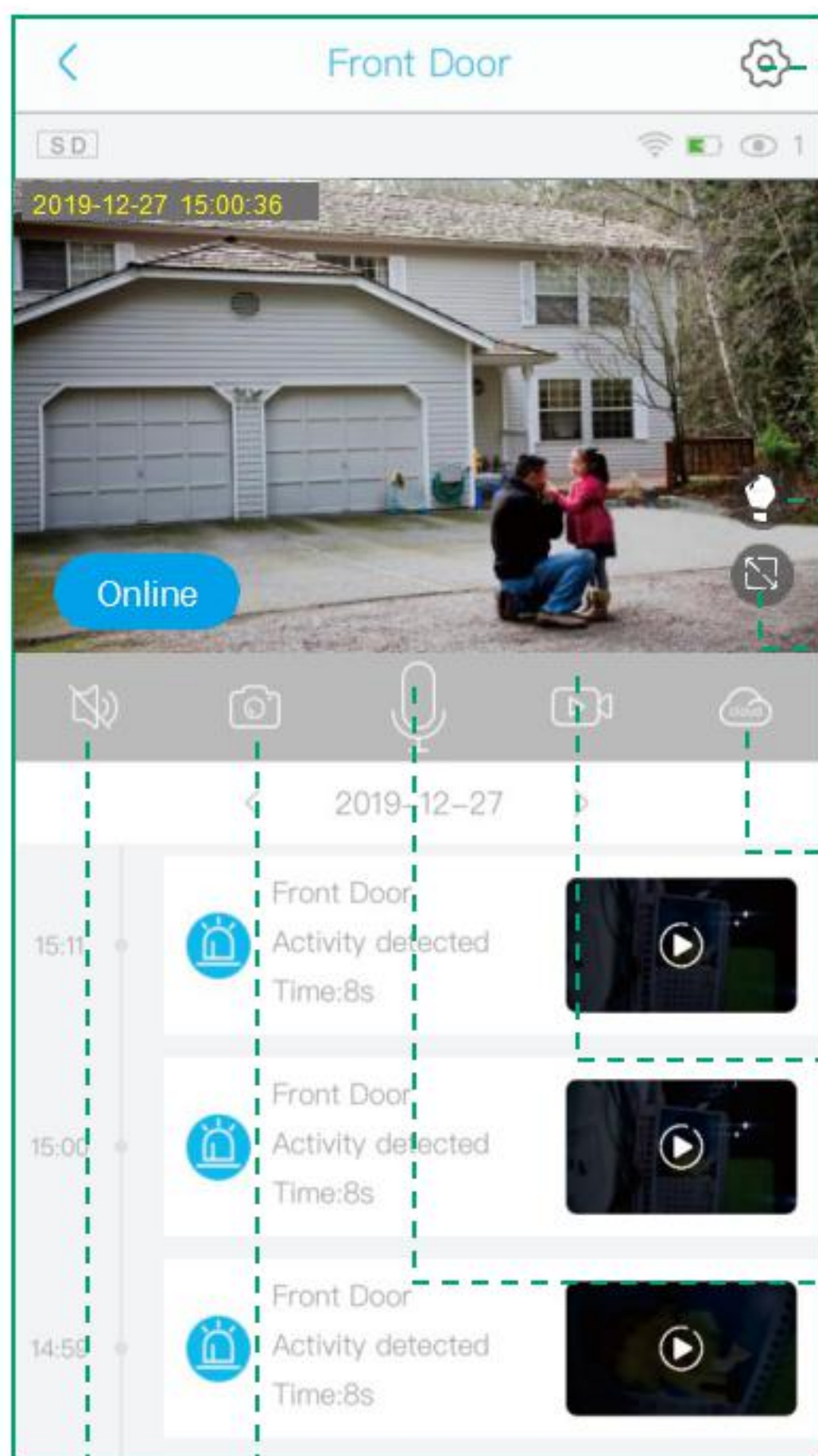


Number of users



Tips: If you have invited a second users to visit your camera. Please pay attention to below points:


1. You can share different permission for every one as you wish
2. You can Customize the permission as you wish

Detailed App Instructions




Setting: Click  to enter into device settings. (Check page 21 for more details)


This icon " " is to turn on the spot light during night. The spot light will turn on to record starlight color video clip when there's motion detected by the camera. You can click it to switch to infrared LEDS " " night vision mode to disable spot light.Camera will record motion in black and white video mode.

Click the icon  to switch to full screen play

Cloud storage: Click  to playback videos saved in cloud storage.

Manual Recording:Click  to manually record and the videos will be saved to your phone's Album

Two-way Talk: Click  to speak to visitors and hear what they say.

Screenshot: Click  to screen capture and pictures will be saved to your phone's album.

Voice: Click  to mute the sounds from the camera.

Detailed App Instructions

SD Card Setting

1) Please turn on the cloud storage so that you can sync the camera time with your phone.

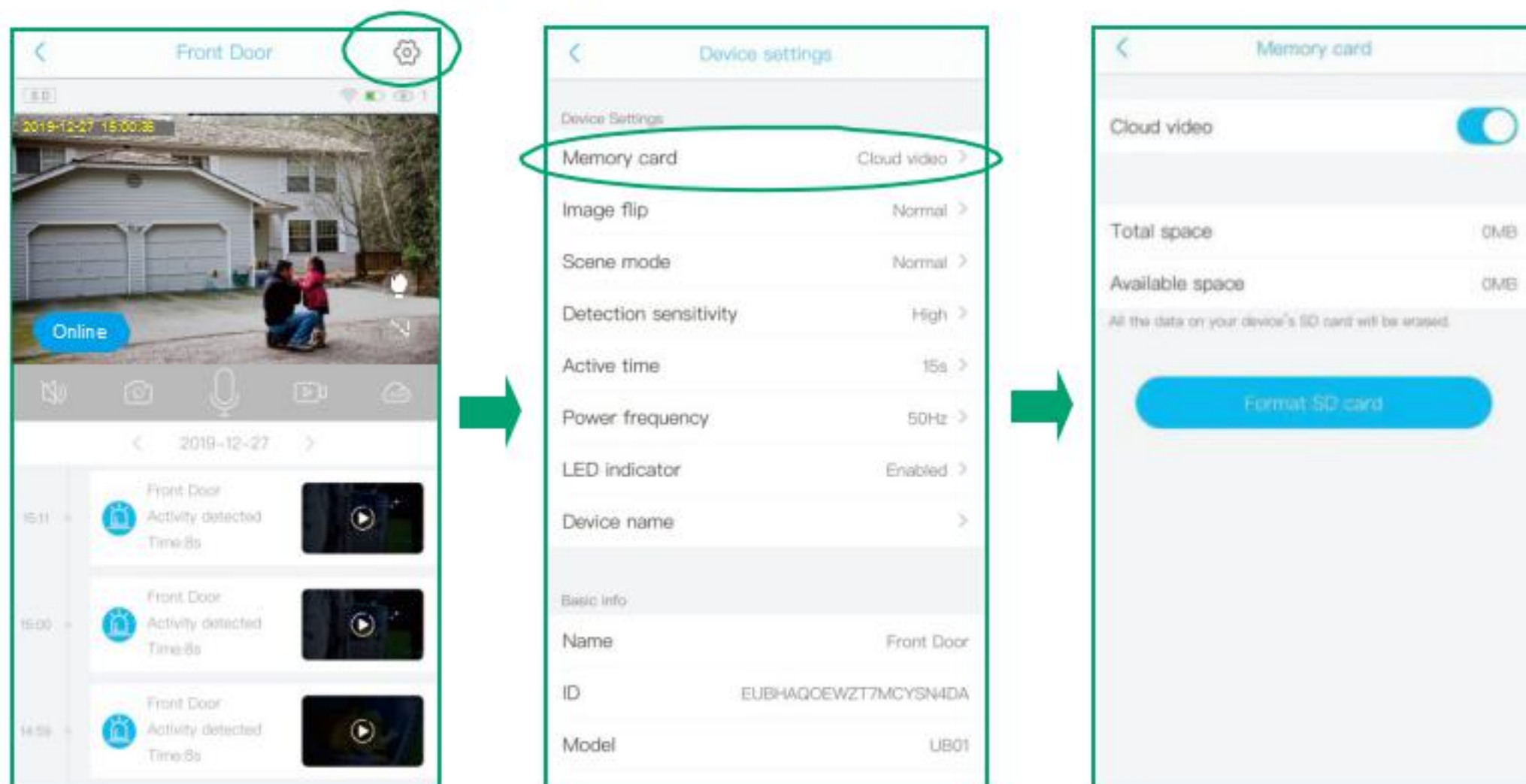
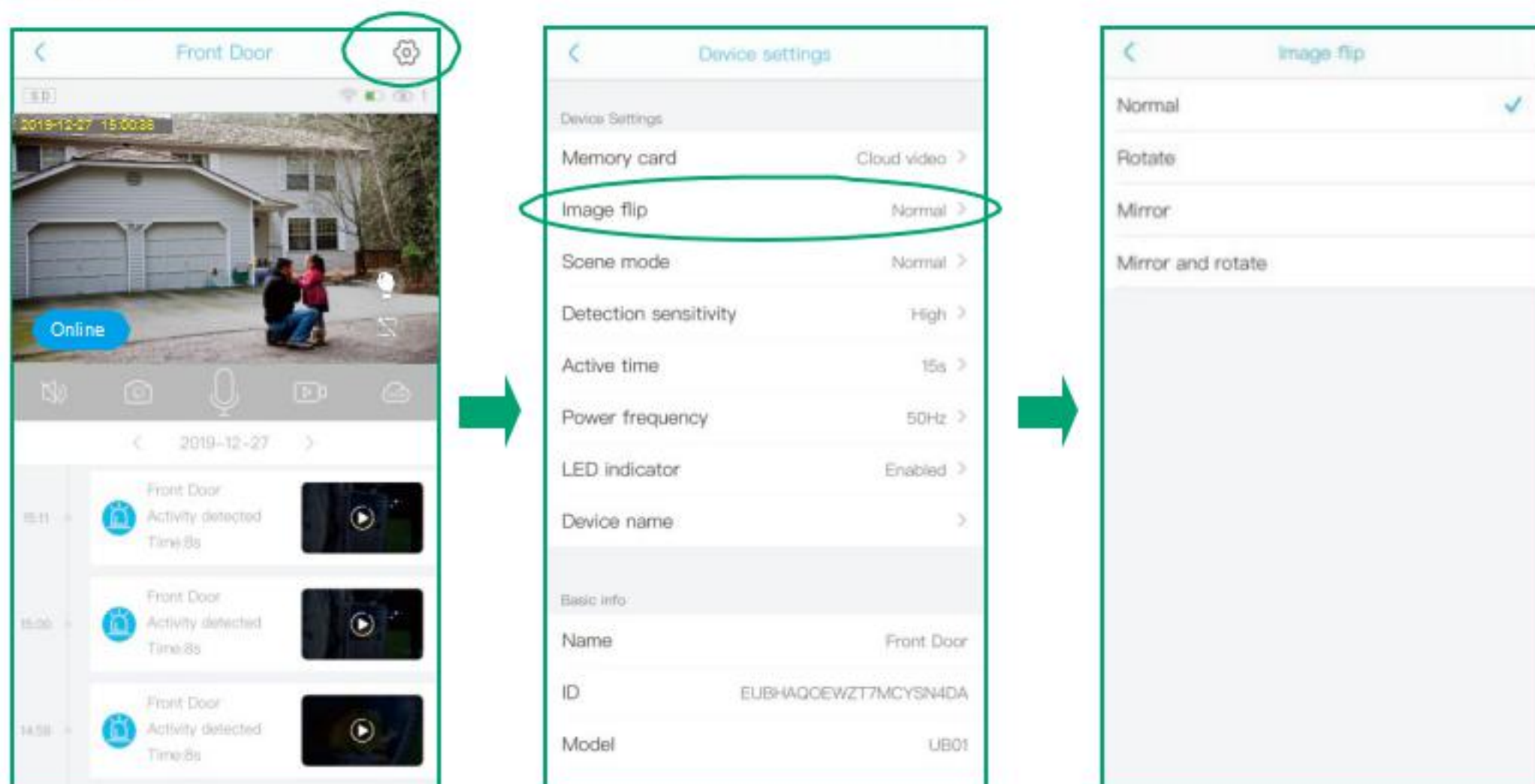


Image flip

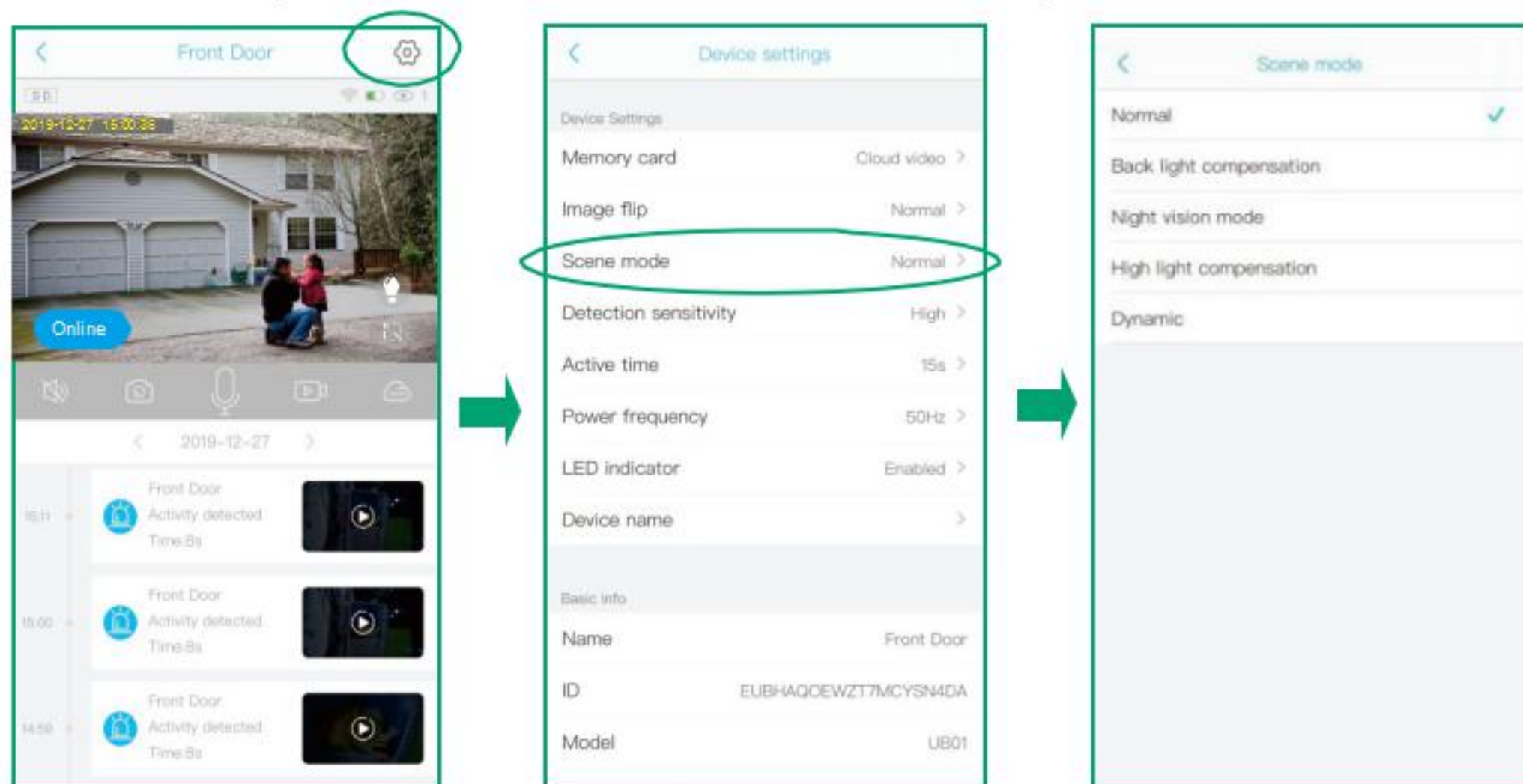
You can choose Normal Rotate, Mirror or Mirror and rotate depends on your hardware installation way. The default is Normal.



Detailed App Instructions

Scene mode

You can choose to set it as Normal, back light compensation, night IR, High light compensation or Dynamic according to your actual light environment of installation place.

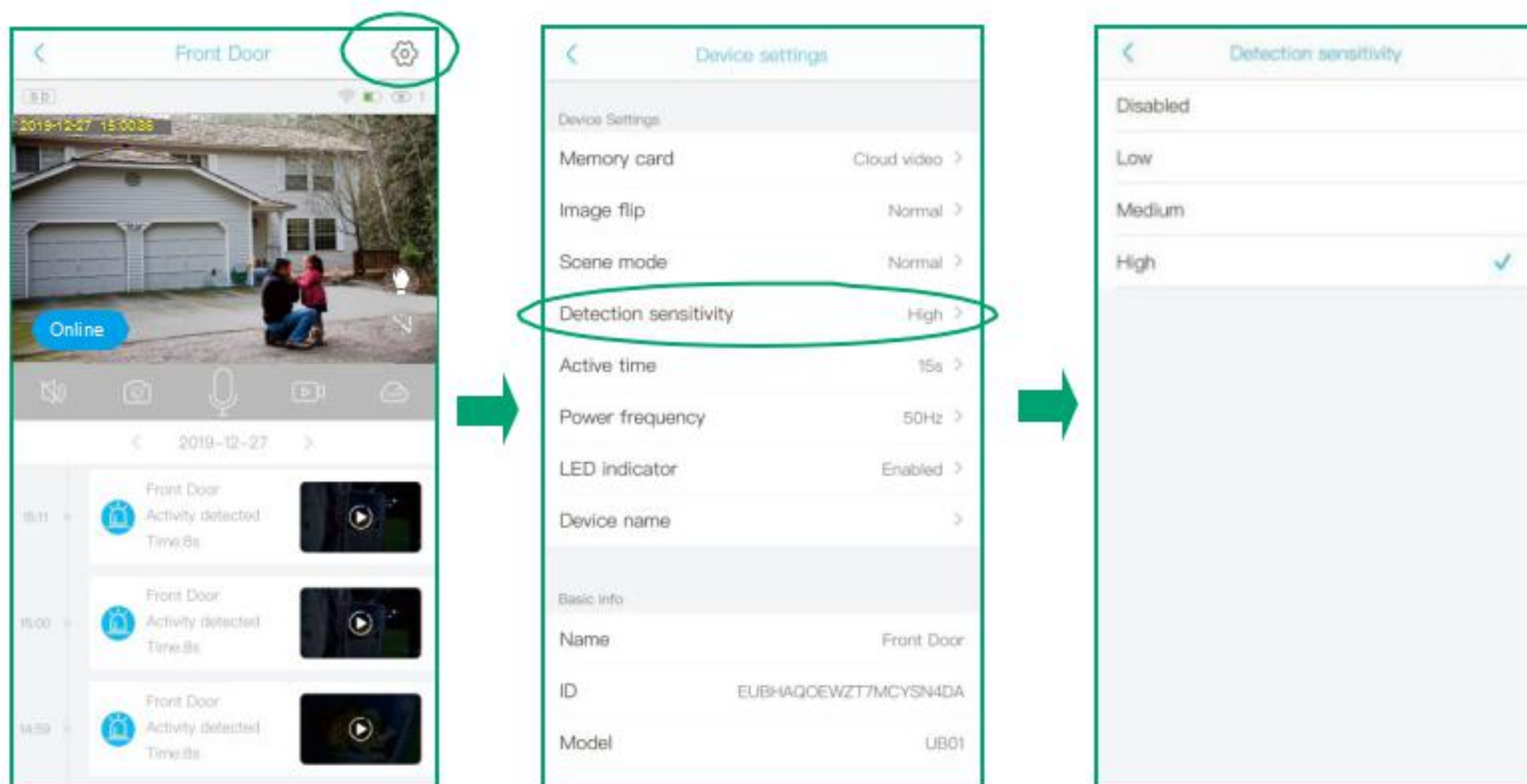


PIR Detection Sensitivity

You can set the PIR sensitivity as Disabled, Low, Medium and High.

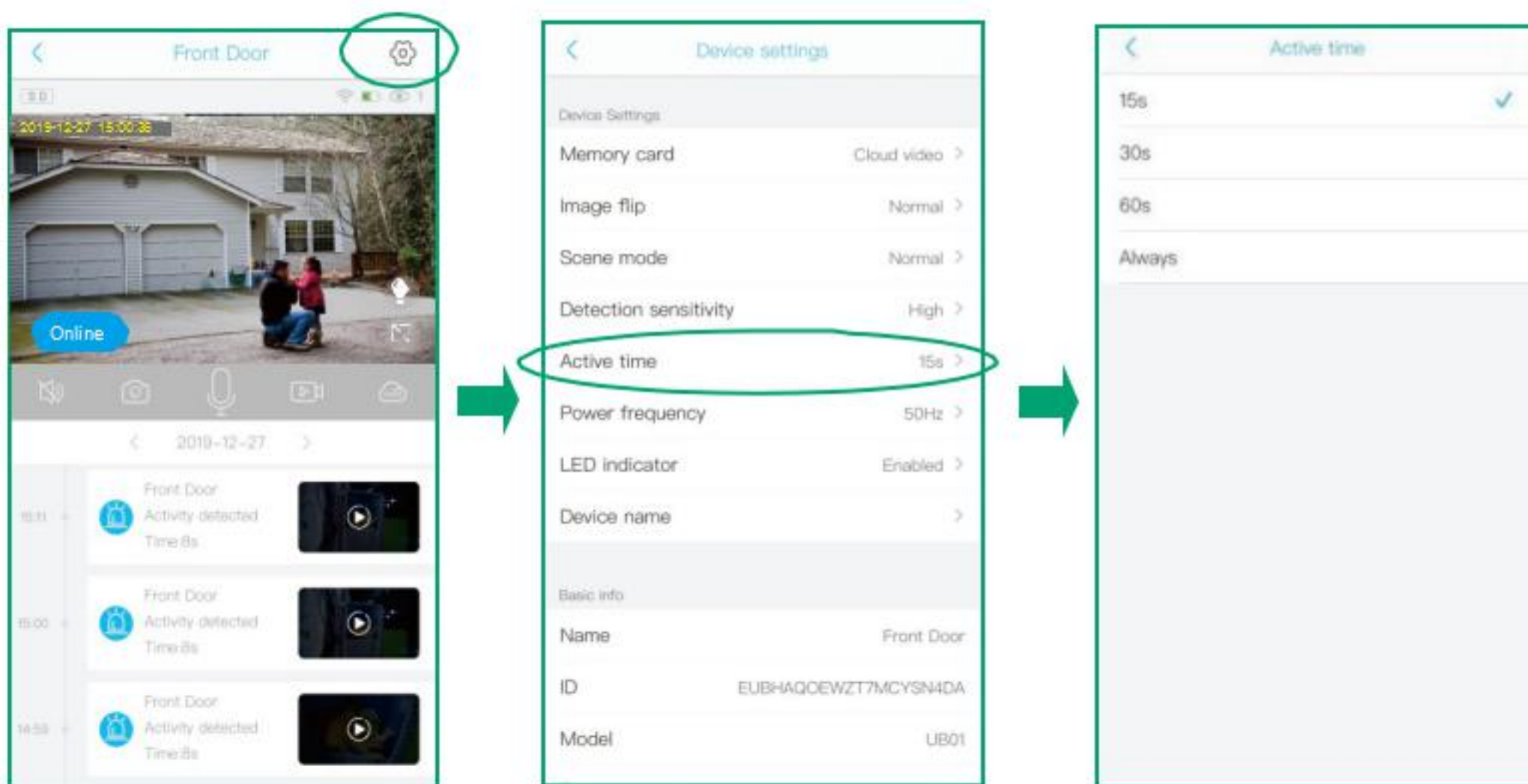
- 1) When you set the PIR as Disabled, you will not record and receive any motion triggered events.
- 2) It is recommended to set the PIR Detection to High so that you could capture as more as a motion triggered from the beginning part of the event.
- 3) Try to capture more the beginning of the triggered event, please adjust your camera angle a bit closer to your aimed spot.

Detailed App Instructions



Active time

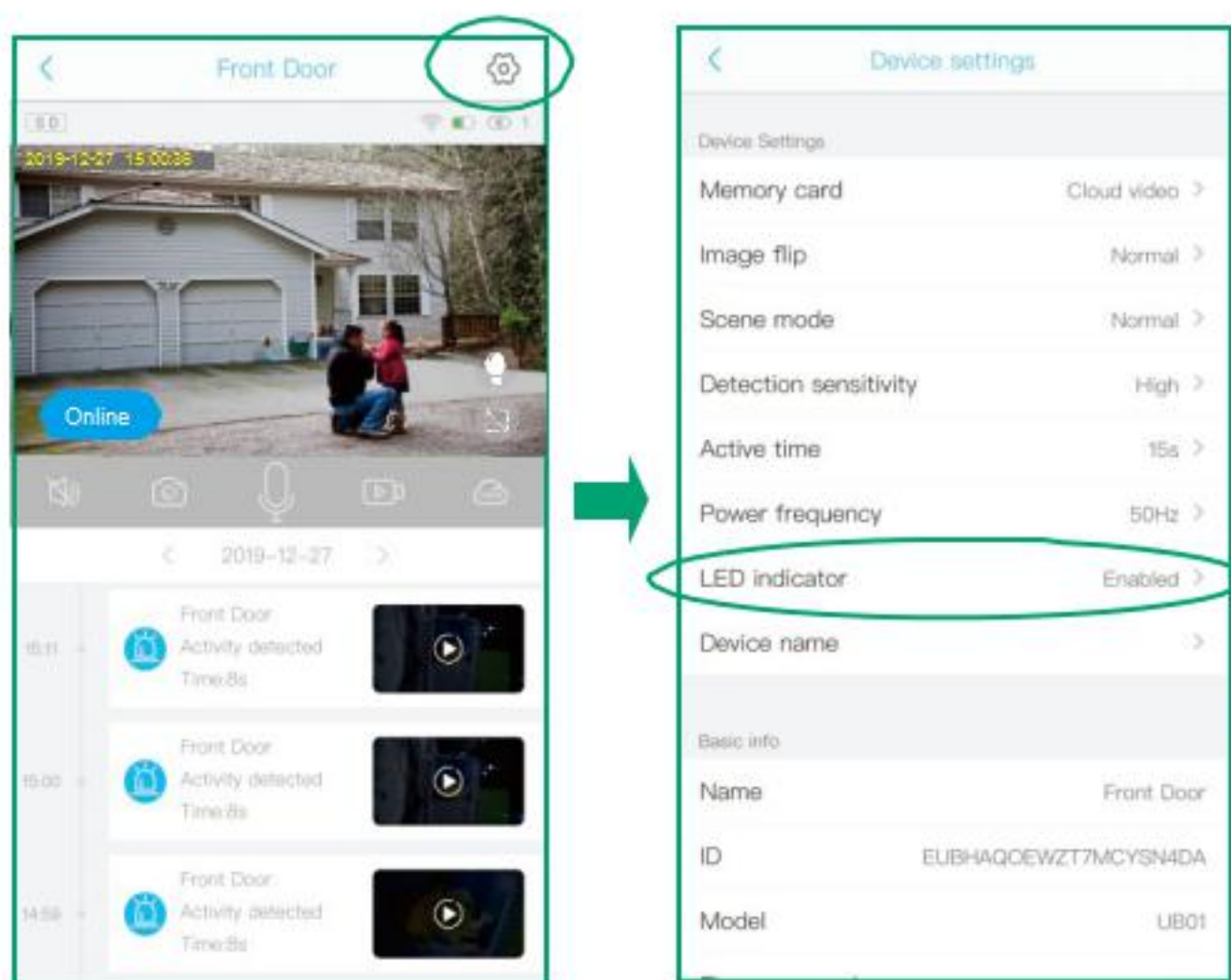
- 1) This is the time you could set for the video length recorded to micro SD card.
- 2) Always: If you choose this option, you will not allow the camera enter into standby mode, the camera will keep recording all the time until battery drains out. (60 seconds per file)



Detailed App Instructions

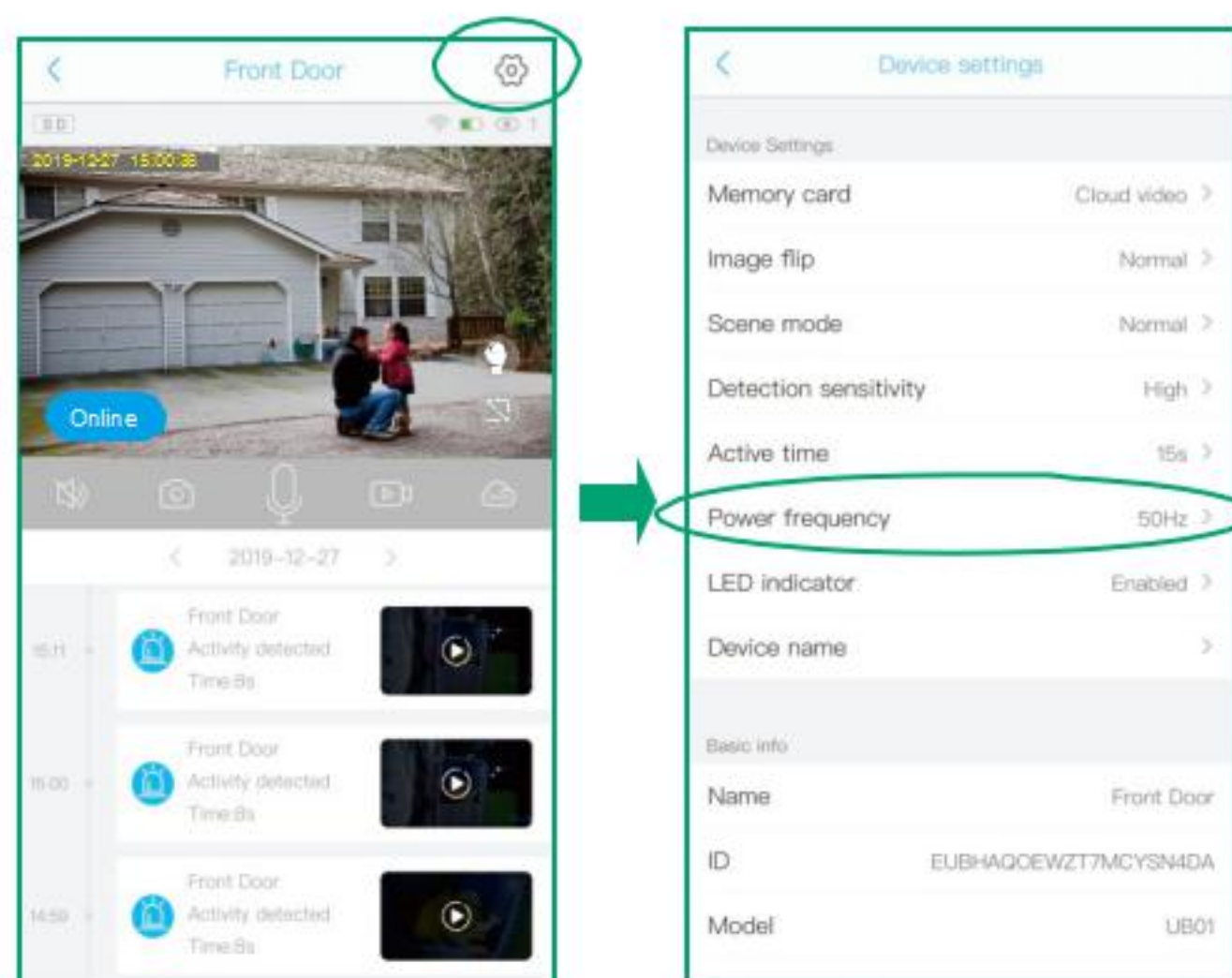
LED indicator

When you choose Enable, the Blue LED will light up to indicate when you operate the camera as it should be. When you choose Disabled, the Blue LED will not light up to indicate the operations or trigger motions. It is recommended to set it as the default.



Power frequency

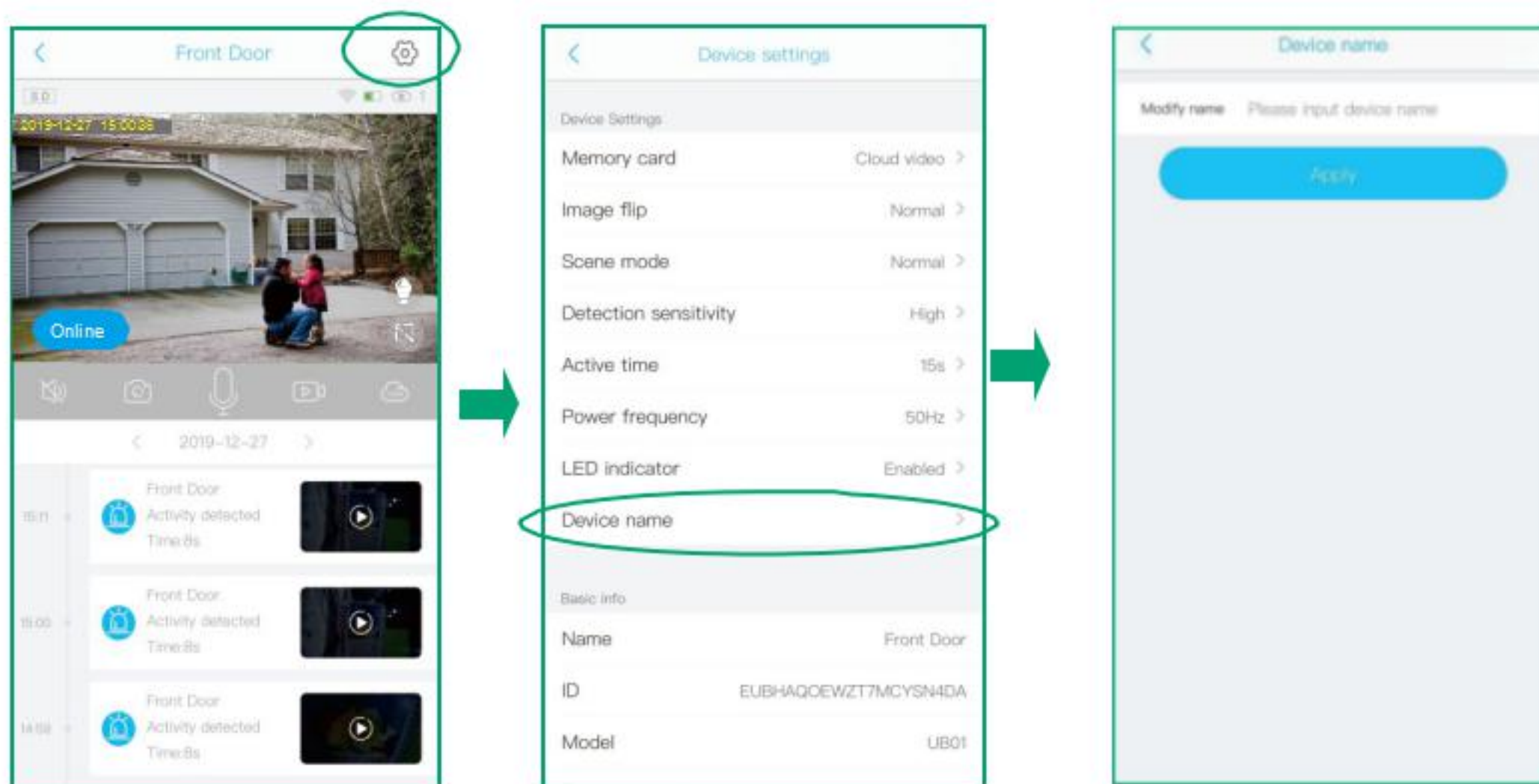
Please choose 60 or 50HZ according to your local frequency. It's defaulted to 60HZ for united states users.



Detailed App Instructions

Device Name

You can set a desired name for your camera.



LED indicators trouble shooting:

Battery box LED blinks green: Camera is in charging

Battery box LED stays green: camera is fully charged

Camera LED blinks blue: Camera is ready for pairing

Camera LED stays blue: Camera paired successfully

Camera LED blinks red once and stay solid blue: Camera detected motion

Camera NO LED after pairing successfully: Camera is in standby mode

Camera LED stays red: Camera didn't pick up Wi-Fi correctly

Camera LED always blinks red: Camera hardware defective

How to save and delete videos

1. Videos can be saved in Cloud Storage:

(1). The videos of PIR activity

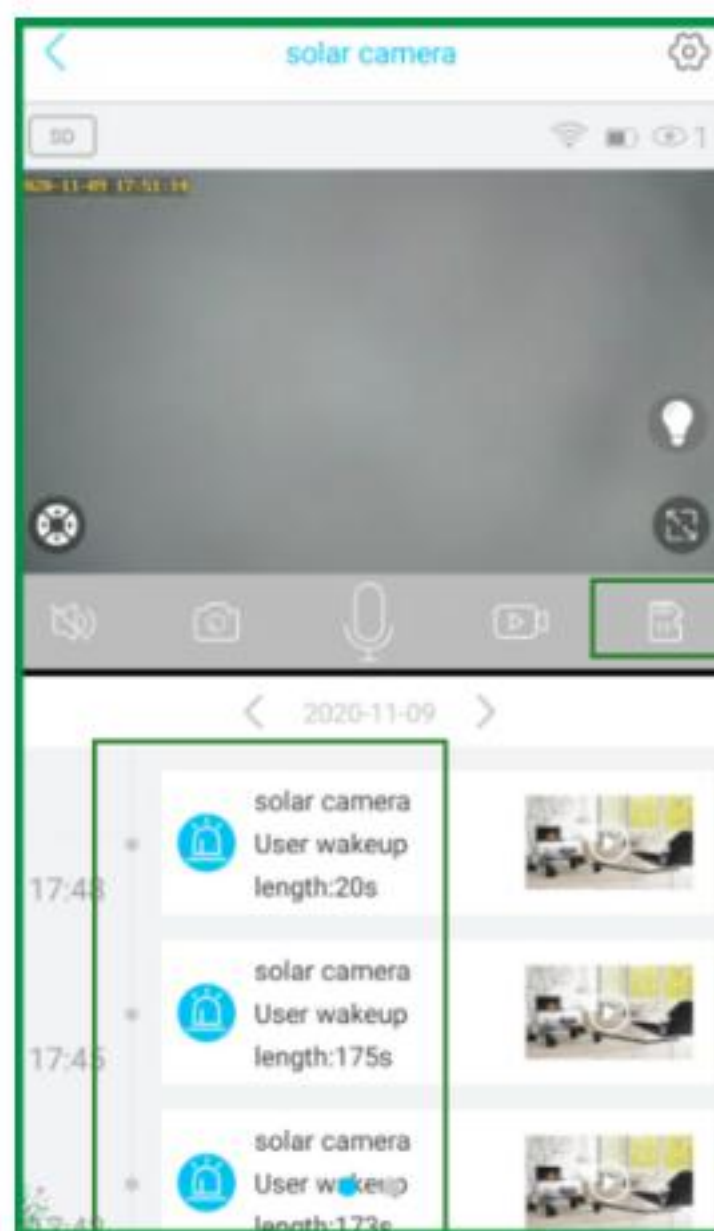
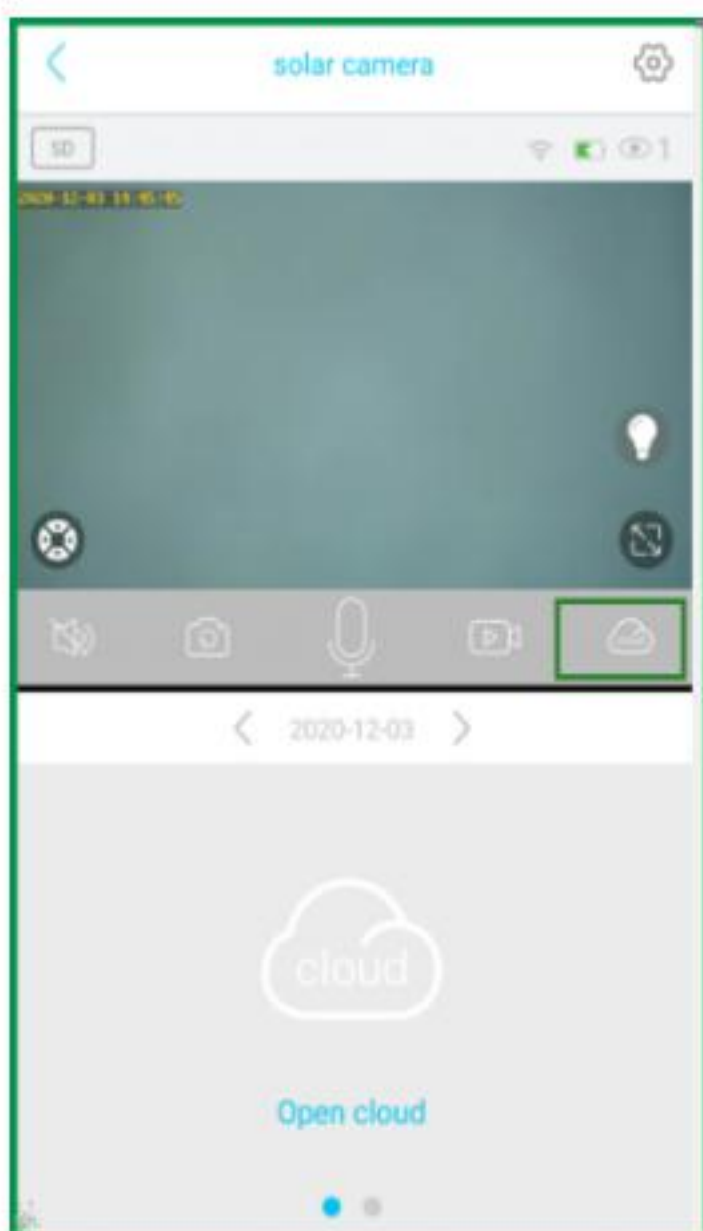
You could save the videos of PIR activities in cloud storage, and you have to pay for the services. and the videos in the Cloud can be playback in the app.

2. PIR motion videos can be saved in the SD card:

Please click "cloud" icon, It will switch to the storage video interface.

You can find recordings in your SD card.

You could playback these PIR motion videos.



3. Videos can be saved on the mobile phone album:

(1). The videos of REC mode

(2). The screenshot

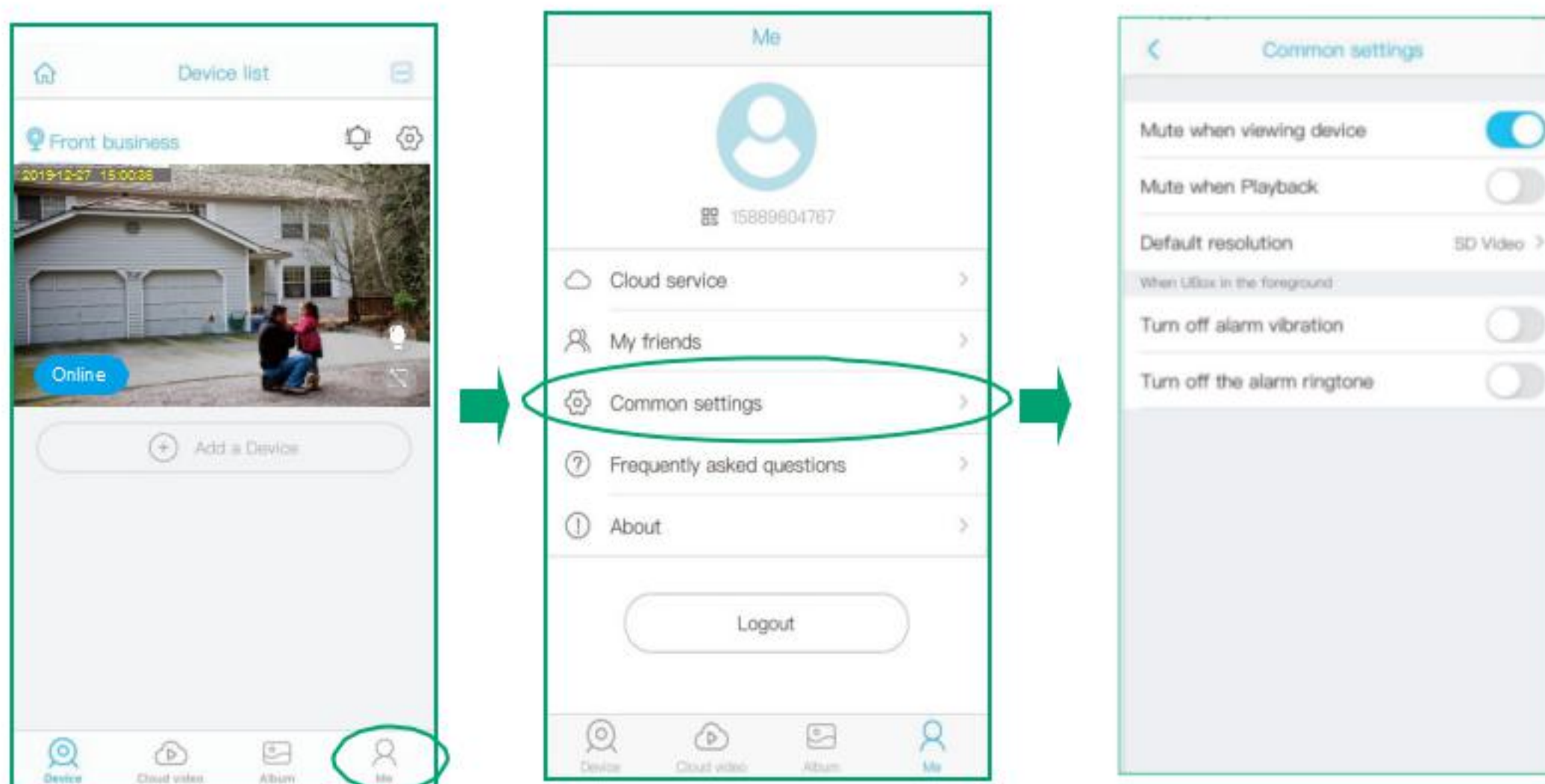
You need to delete the videos of REC mode and the screenshot from your phone's album.

More Settings

Common Settings

Click the common setting, you can choose the resolution to SD(720P) or HD(1080P) by clicking "Default resolution".

You can turn on/off the notification alarm ring tone and vibration for Andriod devices, this is not workable for iOS devices currently.



Frequently Asked Questions

We summarize the frequently questions here, you can get your answers when pairing the camera or using the app.

